

Replacement Heat Pumps Summary

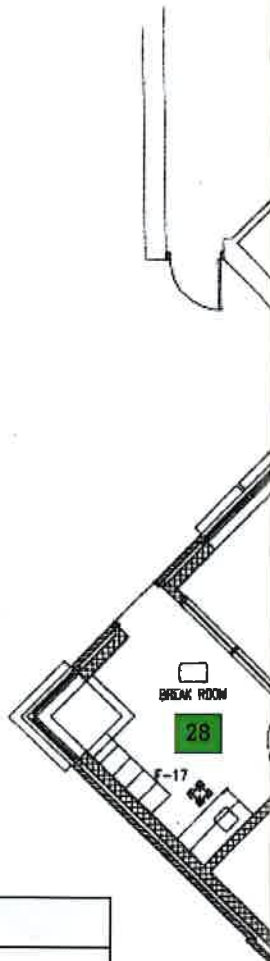
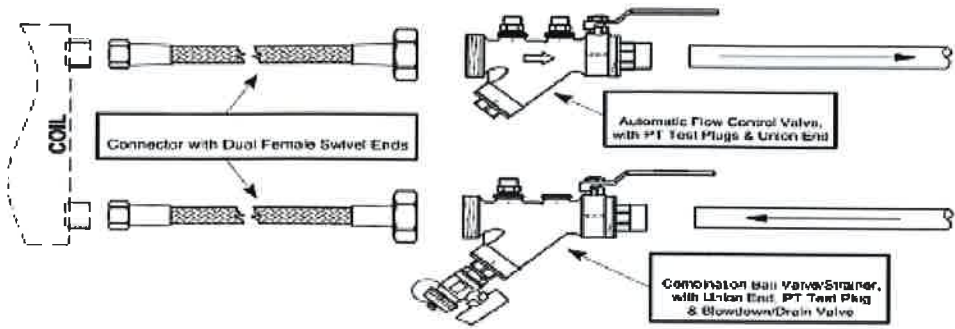
Bldg	Unit Tag	Number of Units to be Replaced	Voltage	Phase	Manuf.	Model
DSS	A	5	208	1	Carrier	50PSH007
DSS	B	2	208	1	Carrier	50PSH007
DSS	E	10	208	1	Carrier	50PSH019
DSS	F	4	208	1	Carrier	50PSH024
DSS	G	7	208	1	Carrier	50PSH030
DSS	H	10	208	1	Carrier	50PSH036
DSS	I	5	208	1	Carrier	50PSH042
DSS	K	1	208	1	Carrier	50PEC09
DSS	HP-1	1	208	3	Carrier	50VQP120
DSS	HP-2	1	208	3	Carrier	50VQP120
Total		46				

Stainless Steel Hose Kit

AHC**** 1/2" to 2" Stainless Steel Braided Hose Kit – Hose kit with a manual shut off valve, auto flow regulator to maintain set GPM and Y strainer for hard water applications. Automatic balancing valves provide a constant flow rate; if the pressure changes (ex. Additional heat pumps) each flow control valve will adjust to the conditions. The Y strainer can filter water with high mineral content which can cause damage over time to equipment.

Specifications:

- Designed for water source heat pump applications.
- Kevlar® reinforced EPDM hose core with stainless steel hose braid
- Swivel connection with dual female ends provides union between heat pump and piping system.
- Brass OT58 fittings
- Ball valve with integral P/T (pressure/temperature) ports and union end



Replacement Heat Pumps Summary

Bldg	Unit Tag	Number of Units to be Replaced	Voltage	Phase	Manuf.	Model
Jail	A	1	208	1	Carrier	50PSH030
Jail	B	2	208	1	Carrier	50PSV030
Jail	C	0	208	1		
Jail	D	2	208	3	Carrier	50PSH036
Jail	E	9	208	3	Carrier	50PSV036
Jail	F	1	208	3	Carrier	50PSH042
Jail	G	4	208	3	Carrier	50PSV042
Jail	H	1	208	3	Carrier	50PSH048
Jail	I	1	208	1	Carrier	50PSV012
Jail	J	3	208	1	Carrier	50PSH019
Jail	K	4	120	1	Carrier	50PSH012
Jail	L	5	208	3	Carrier	50PSV060
Total		33				

Drawing ID #	Unit Tag	Replace	Floor	Room	Type	Replacement Heat Pumps				Heating Performance		
						Manuf.	Model	Water Flow GPM	CFM	Heating Capacity (MBH)	COP	EAT db F
0	4	Yes	1	Hall near 127	Horizontal	Carrier	50PSH036	9	1200	46.4	5.8	70
1	2	No	1	Hall near 116	Horizontal							
2	4	Yes	1	121	Horizontal	Carrier	50PSH036	9	1200	46.4	5.8	70
3	2	No	1	Hall near 113	Horizontal							
4	2	No	1	Hall near 112	Horizontal							
5	3	Yes	1	Mens BR	Horizontal	Carrier	50PSH030	7.5	1000	33.8	5.7	70
6	5	Yes	1	Lobby	Horizontal	Carrier	50PSH042	10.5	1400	47.8	6	70
7	4	Yes	1	Womens BR	Horizontal	Carrier	50PSH036	9	1200	46.4	5.8	70
8	1	Yes	1	Hall near 144	Horizontal	Carrier	50PSH019	4.5	600	22.4	5.2	70
9	2	Yes	1	Hall near 143	Horizontal	Carrier	50PSH024	6	800	31.4	5.4	70
10	3	No	1	Hall near 140	Horizontal							
11	3	Yes	2	Hall near 219	Horizontal	Carrier	50PSH030	7.5	1000	33.8	5.7	70
12	3	Yes	2	Hall near 215	Horizontal	Carrier	50PSH030	7.5	1000	33.8	5.7	70
13	3	Yes	2	Lounge	Horizontal	Carrier	50PSH030	7.5	1000	33.8	5.7	70
14	2	Yes	2	Hall near 211	Horizontal	Carrier	50PSH024	6	800	31.4	5.4	70
15	3	No	2	Hall near 207	Horizontal							
16	1	Yes	2	Observation Room	Horizontal	Carrier	50PSH019	4.5	600	22.4	5.2	70
17	2	Yes	2	241	Horizontal	Carrier	50PSH024	6	800	31.4	5.4	70
18	4	Yes	2	241	Horizontal	Carrier	50PSH036	9	1200	46.4	5.8	70
19	1	Yes	2	Hall near 230	Horizontal	Carrier	50PSH019	4.5	600	22.4	5.2	70
20	5	Yes	2	Hall near 228	Horizontal	Carrier	50PSH042	10.5	1400	47.8	6	70
21	3	Yes	2	Hall near 222	Horizontal	Carrier	50PSH030	7.5	1000	33.8	5.7	70

Replacement Heat Pumps Summary						
Bldg	Unit Tag	Number of Units to be Replaced	Voltage	Phase	Manuf.	Model
Vet	1	3	208	1	Carrier	50PSH019
Vet	2	3	208	1	Carrier	50PSH024
Vet	3	5	208	1	Carrier	50PSH030
Vet	4	4	208	1	Carrier	50PSH036
Vet	5	2	208	1	Carrier	50PSH042
Total		17				

Stainless
AHC****
maintain
if the pres
strainer c

Specific
• Designe
• Kevlar®
• Swivel c
• Brass C
• Ball val