

CR 6 (RAVINE RD.) CULVERT REPLACEMENT

Original structure:

Squash pipe dimension: 7'-4" x 9'-7"

Hydraulic opening: 57.153 SqFt

During 100 yr storm event, high water elevation overtopped road. Pipe size was inadequate for storm event flow and caused flooded upstream. Damage done to roadway shoulders and impact damage to bottom of pipe.

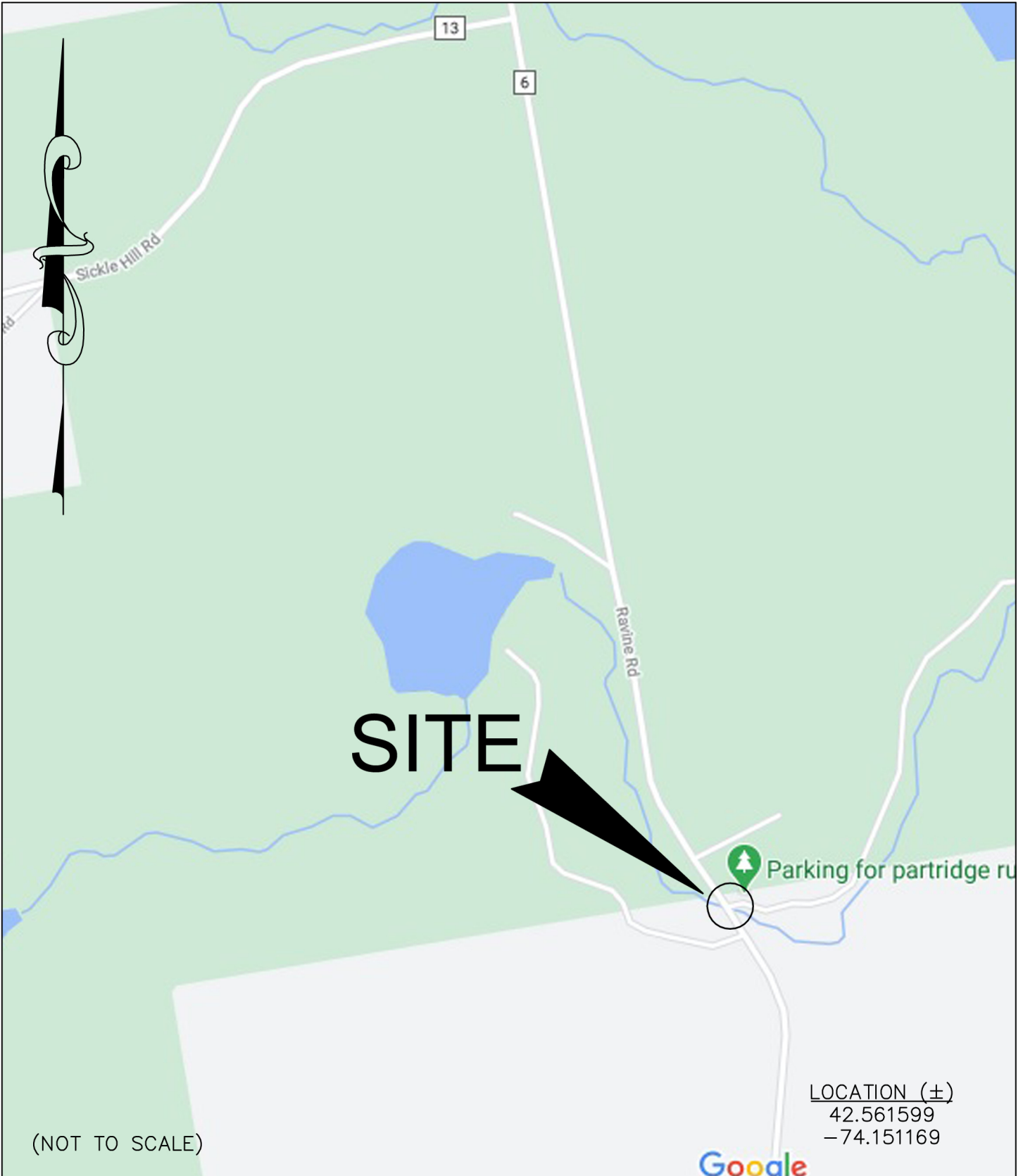
Replacement Structure:

Structural Steel Arch dimensions: 8'-2" x 19'-0"

Hydraulic Opening: 141.765 SqFt

New structure increases Hydraulic Opening by 248%

New opening should be able to handle 100yr storm event flow



(NOT TO SCALE)

LOCATION (±)
42.561599
-74.151169



ALBANY COUNTY
DEPT. OF PUBLIC WORKS
HIGHWAY ENGINEERING DIVISION

CR 6 CULVERT REPLACEMENT

TOWN OF BERNE

