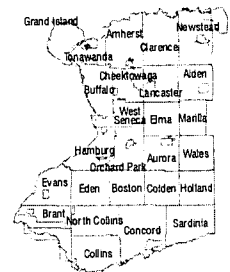


SPAULDING COMMERCE PARK

Tonawanda, New York

FIGURE 11
Alternative #3



ERIE COUNTY - NEW YORK
NOT DRAWN TO SCALE

LEGEND

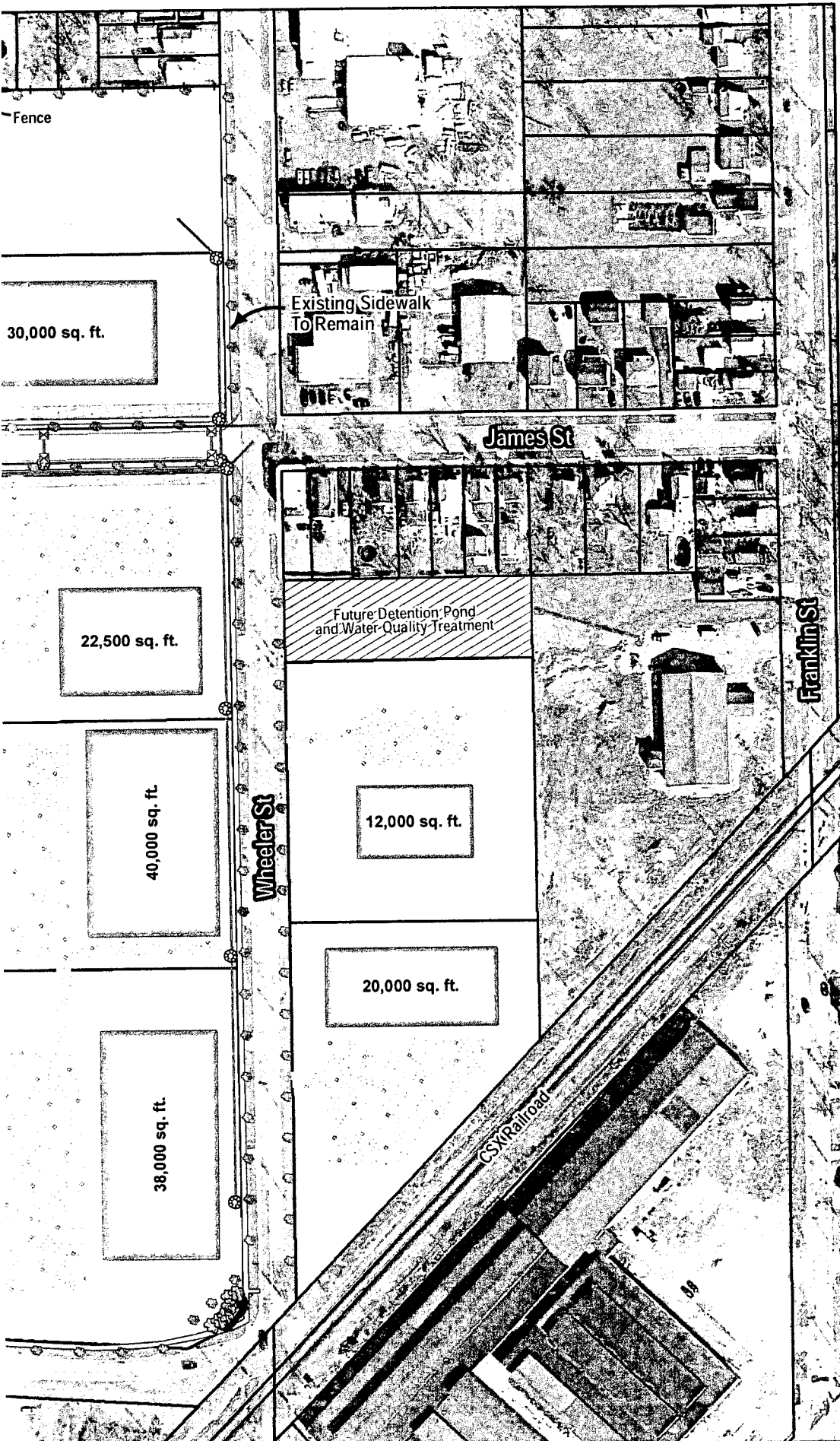
- Parcels
- Building Footprint
- Parking Lot
- Road
- Sidewalk
- Waterline
- Catch Basin
- Manhole
- Sanitary Sewer
- Storm Sewer
- Easement**
 - National Grid Easement
 - Private Utility Easement

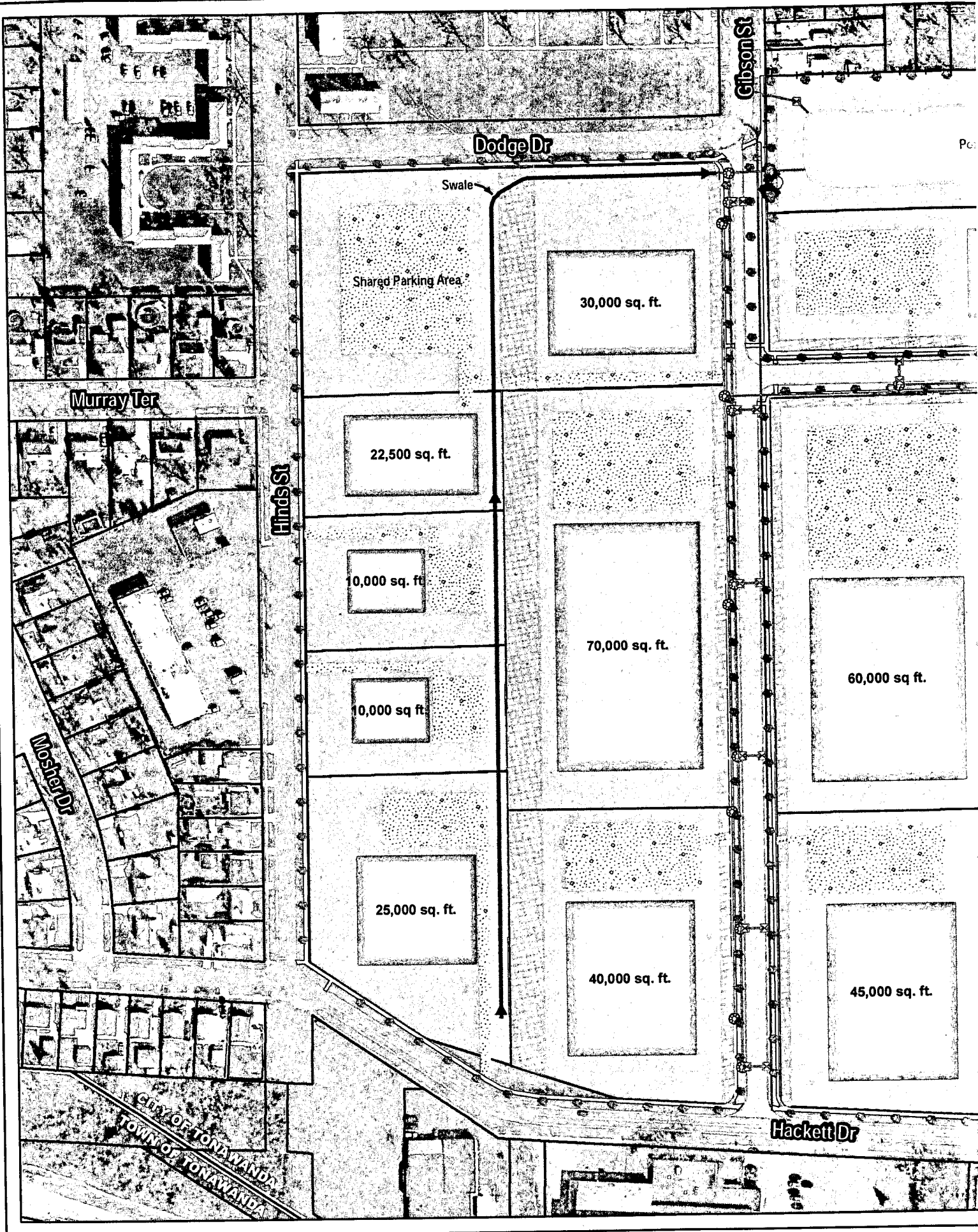
0 25 50 100
Feet

wendel

WQ Project # 272910
Map Created: March, 2011

Wendel Duchscherer Architects & Engineers, P.C.
shall assume no liability for:
1. Any errors, omissions, or inaccuracies in the information provided regardless of how caused or; 2. Any decision or action taken or not taken by the reader in reliance upon any information or data furnished hereunder.
Data Sources: NYS GIS Clearinghouse





Dodge Dr

Gibson St

Swale

Shared Parking Area

30,000 sq. ft.

Murray Ter

22,500 sq. ft.

Hinds St

10,000 sq. ft.

70,000 sq. ft.

60,000 sq. ft.

10,000 sq. ft.

Moister Dr

25,000 sq. ft.

40,000 sq. ft.

45,000 sq. ft.

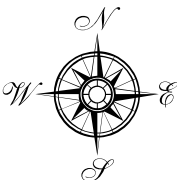
Hackett Dr

CITY OF TONAWANDA
TOWN OF TONAWANDA

TOWN OF TONAWANDA

TONAWANDA
OPPORTUNITY AREA

NOMINATION STUDY



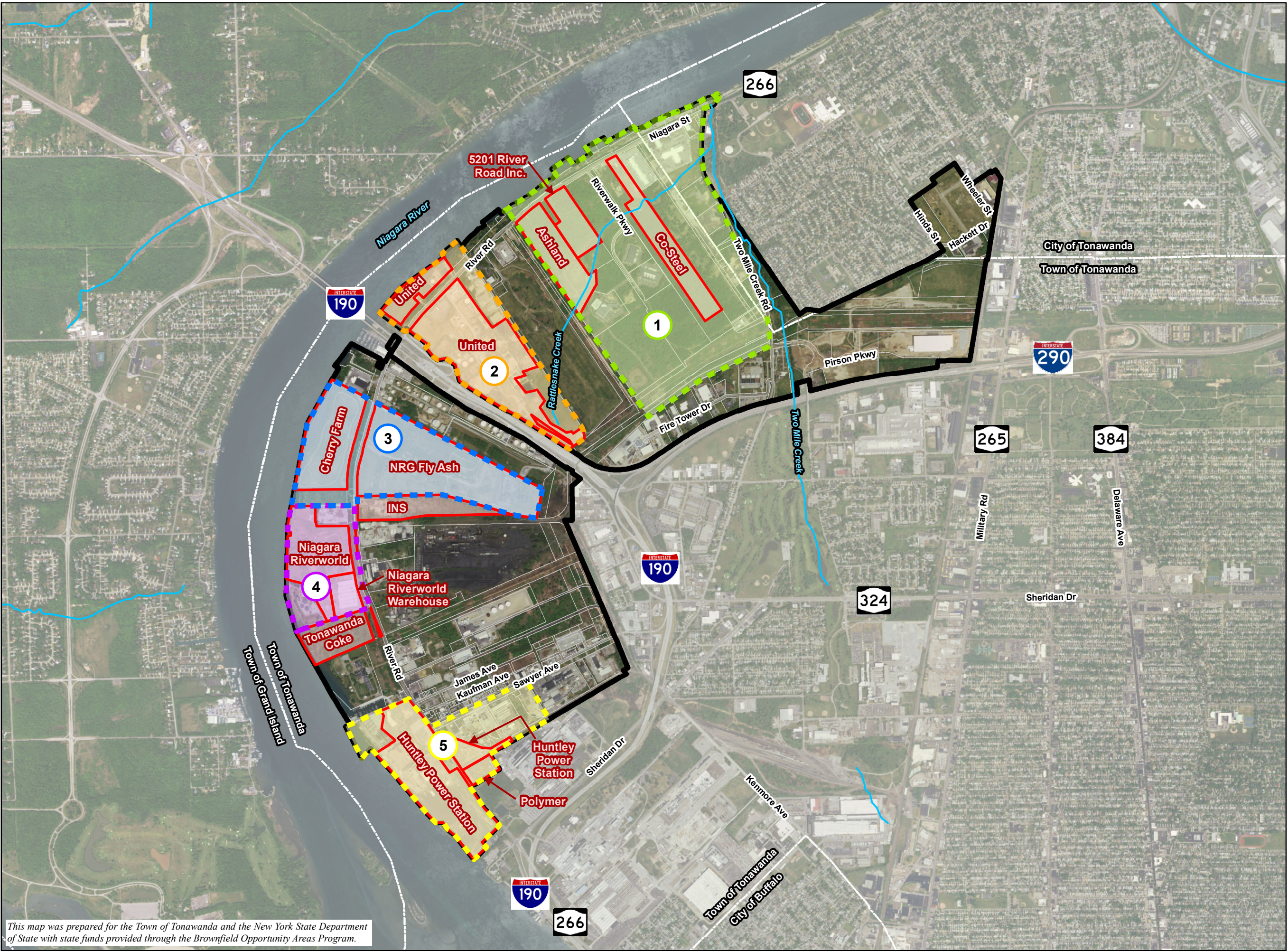
STRATEGIC AREAS AND
STRATEGIC SITES MAP

- TOA Nomination Study Area
- Municipal Boundaries (White)
- Creek
- Other Properties
- Strategic Sites
- Strategic Areas**
 - Strategic Area 1
 - Strategic Area 2
 - Strategic Area 3
 - Strategic Area 4
 - Strategic Area 5

Sources:
1. TOA Nomination Study Area Boundary: Created by LaBella using parcel boundaries provided by the Town of Tonawanda
2. Town and City of Tonawanda property boundaries: Provided by the Town of Tonawanda
3. Strategic Sites and Strategic Areas: Created by LaBella based on Town and Steering Committee input
4. Roads and Municipal Boundaries: Census Shapefiles from TIGER/Line database (minor edits by LaBella to municipal boundaries to match property lines)
5. Aerial background: Esri, i-cubed, USDA, USGS, AEX, GeoEye, Getmapping, Aerogrid, IGN, IGP, and the GIS User Community.

0 2,000 Feet
1:24,000

Labella Project No:
2151300



This map was prepared for the Town of Tonawanda and the New York State Department of State with state funds provided through the Brownfield Opportunity Areas Program.



This map was prepared for the Town of Tonawanda and the New York State Department of State with state funds provided through the Brownfield Opportunity Areas Program.



www.edra.com

LABELLA

Associates, D.P.C.

TONAWANDA
OPPORTUNITY AREA
NOMINATION STUDY



STRATEGIC AREA 1
VISIONING WORKSHOP

+++++ Railroad
--- Multi-Use Path
--- Creeks

BOA Strategic Area
--- Strategic Area 1
--- NYSEDEC Wetland

National Wetland
Emergent/Forested/Shrub Wetland
Pond


Building Footprint
Existing Building
Demolished Building

Sources:
1. TOA Nomination Study Area Boundary: Created by LaBella using parcel boundaries provided by the Town of Tonawanda
2. Town and City of Tonawanda property boundaries: Provided by the Town of Tonawanda
3. Strategic Sites and Strategic Areas: Created by LaBella based on Town and Steering Committee input
4. Roads, Railroads, Creeks and Municipal Boundaries: Census Shapefiles from TIGER/Line database (minor edits by LaBella to municipal boundaries to match property lines)
5. Federal Wetlands: Obtained from National Wetland Survey - US Fish & Wildlife Service (2016)
6. State Wetlands: Obtained from CUGIR
7. Aerial background: Esri, i-cubed, USDA, USGS, AEX, GeoEye, Getmapping, Aerogrid, IGN, IGP, and the GIS User Community.

0 500 Feet
1:3,618

Page 10 of 10 | Town of Tonawanda BOA Opportunity Area Visioning Workshop | November 2016





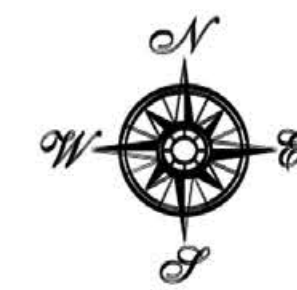
www.edrapp.com

LABELLA
Associates, D.P.C.

TOWN OF TONAWANDA

TONAWANDA
OPPORTUNITY AREA

NOMINATION STUDY



STRATEGIC AREA 2
VISIONING WORKSHOP

Multi-Use Path

Public Transit
(NFTA Bus
Routes): Route 40
Buffalo-NiagaraF...

----- Railroad

Existing Building

Demolished
Building

Creeks

NYSDEC Wetland

National Wetland

Emergent/Forest...
Wetland

Pond

**BOA Strategic
Area**

----- Strategic Area 2

Sources:

1. TOA Nomination Study Area
Boundary: Created by LaBella
using parcel boundaries
provided by the Town of
Tonawanda

2. Town and City of Tonawanda
property boundaries: Provided
by the Town of Tonawanda

3. Strategic Sites and Strategic
Areas: Created by LaBella
based on Town and Steering
Committee input

4. Roads, Railroads, Creeks
and Municipal Boundaries:
Census Shapefiles from
TIGER/Line database (minor
edits by LaBella to municipal
boundaries to match property
lines)

5. Federal Wetlands: Obtained
from National Wetland Survey -
US Fish & Wildlife Service
(2016)

6. State Wetlands: Obtained
from CUGIR
database


7. Local and Private Roads
(within Town of
Tonawanda), Bike Lanes, and
Multi-Use Path:

0 500 Feet

1:3,618



This map was prepared for the Town of Tonawanda and the New York State Department of State with state funds provided through the Brownfield Opportunity Areas Program.



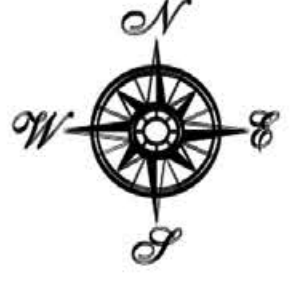
www.edrapp.com

LaBella
Associates, D.P.C.

TON OF TONAWANDA

TONAWANDA
OPPORTUNITY AREA

NOMINATION STUDY



STRATEGIC AREA 4
VISIONING WORKSHOP

----- Railroad

Existing Building

Demolished Building

Creeks

Multi-Use Path

Public Transit (NFTA Bus Route)

Route 40 Buffalo-NiagaraF...

BOA Strategic Area

Strategic Area 4

National Wetland

Emergent/Forest... Wetland

Pond

Sources:

1. TOA Nomination Study Area Boundary: Created by LaBella using parcel boundaries provided by the Town of Tonawanda

2. Town and City of Tonawanda property boundaries: Provided by the Town of Tonawanda

3. Strategic Sites and Strategic Areas: Created by LaBella based on Town and Steering Committee input

4. Roads, Railroads, Creeks and Municipal Boundaries: Census Shapefiles from TIGER/Line database (minor edits by LaBella to municipal boundaries to match property lines)

5. Federal Wetlands: Obtained from National Wetland Survey - US Fish & Wildlife Service (2016)

6. State Wetlands: Obtained from CUGIR database

7. Local and Private Roads (within Town of Tonawanda), Bike Lanes, and Multi-Use Path:

0 200 Feet

1:1,767