

**Legend**

**Surficial Geology**

- al - recent deposits
- alf - alluvial fan
- co - colluvium
- cof - colluvial fan
- pm - swamp deposits
- d - dunes
- lb - lacustrine beach
- ld - lacustrine delta
- lsc - lacustrine silt & clay
- ls - lacustrine sand
- og - outwash sand & gravel
- fg - fluvial gravel
- fd - fluvial deltaic deposits
- k - kame deposits
- km - kame moraine
- tm - till moraine
- t - fill
- udc - undifferentiated drift complex
- r - rock

Data Sources:  
 Surficial Geology, Hudson Mohawk Sheet  
 NYS Museum Map and Chart Series No. 40

**TOWN OF ROSEBOOM**  
**SURFICIAL GEOLOGY**  
 NEW YORK

Prepared by:  
 Otsego County  
 Planning Department  
 197 Main Street  
 Cooperstown, NY  
 13326

Scale in Miles  
 0 0.4 0.8 1.2 1.6

SHEET 1 OF 1

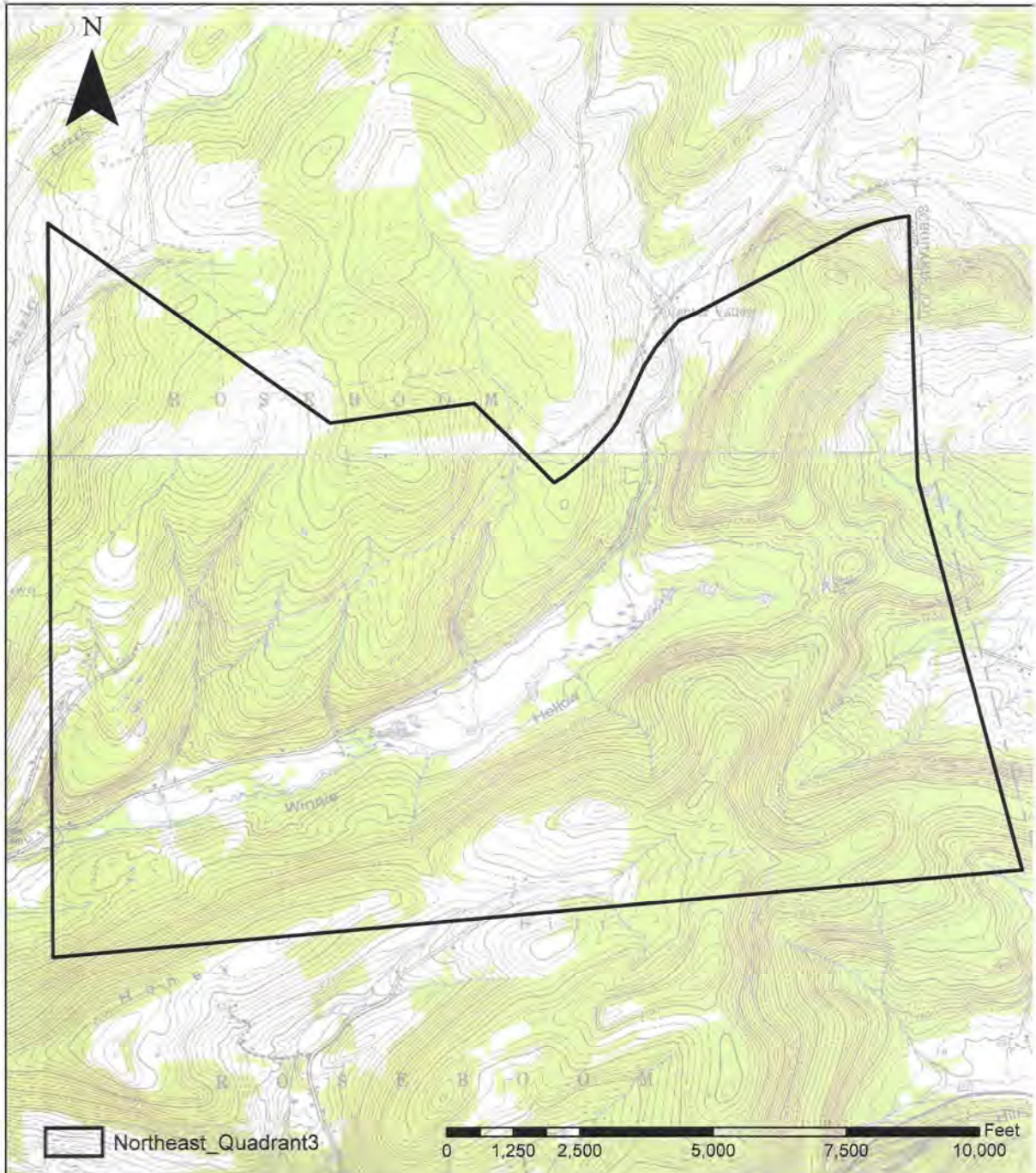
Date: 01/2011  
 Prepared By: J. Mackoff  
 File Path Name: \\GIS\GISDATA\Municipal\A\Town\Roseboom\_Surficial.GIS  
 Plot Path Name: \\GIS\GISDATA\Municipal\A\Town\Roseboom\_Surficial.GIS



County: Otsego  
Town: Roseboom  
Northeast Quadrant  
Topographic Map

Otsego County Soil & Water  
Conservation District

07/05/2016  
Assisted by: Danielle Parker

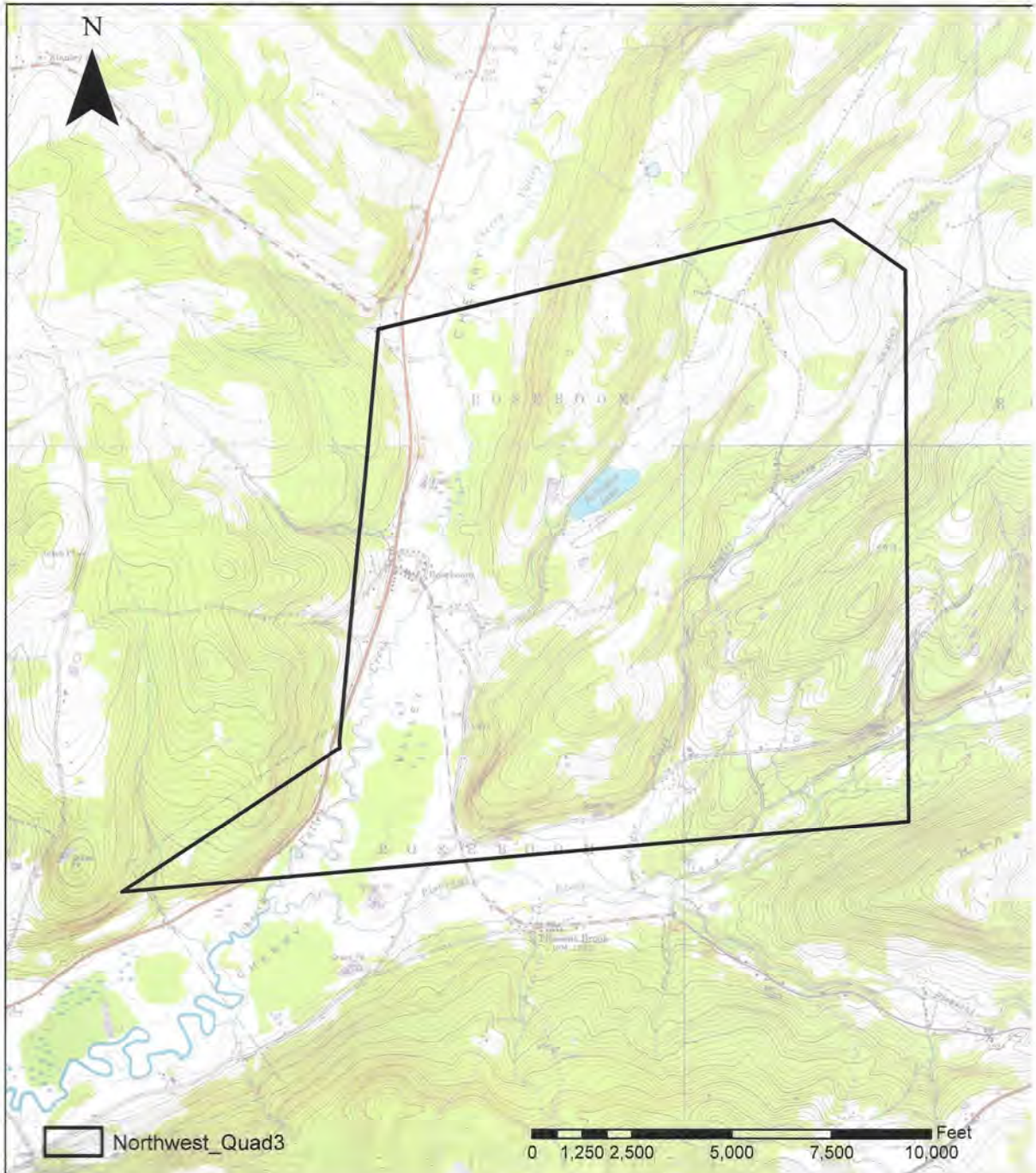




County: Otsego  
Town: Roseboom  
Northwest Quadrant  
Topographic Map

Otsego County Soil & Water  
Conservation District

07/05/2016  
Assisted by: Danielle Parker

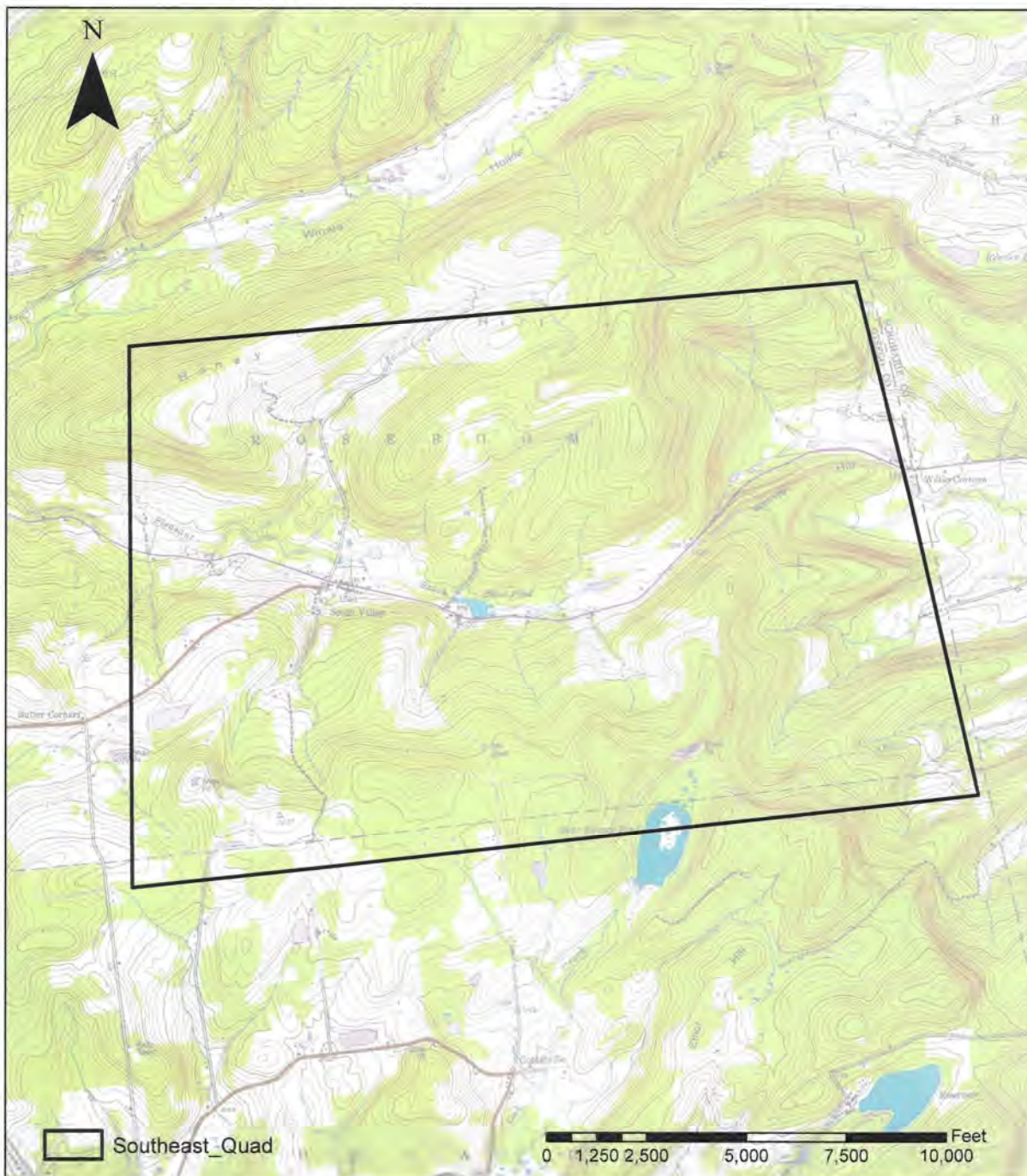




County: Otsego  
Town: Roseboom  
Southeast Quadrant  
Topographic Map

Otsego County Soil & Water  
Conservation District

07/05/2016  
Assisted by: Danielle Parker

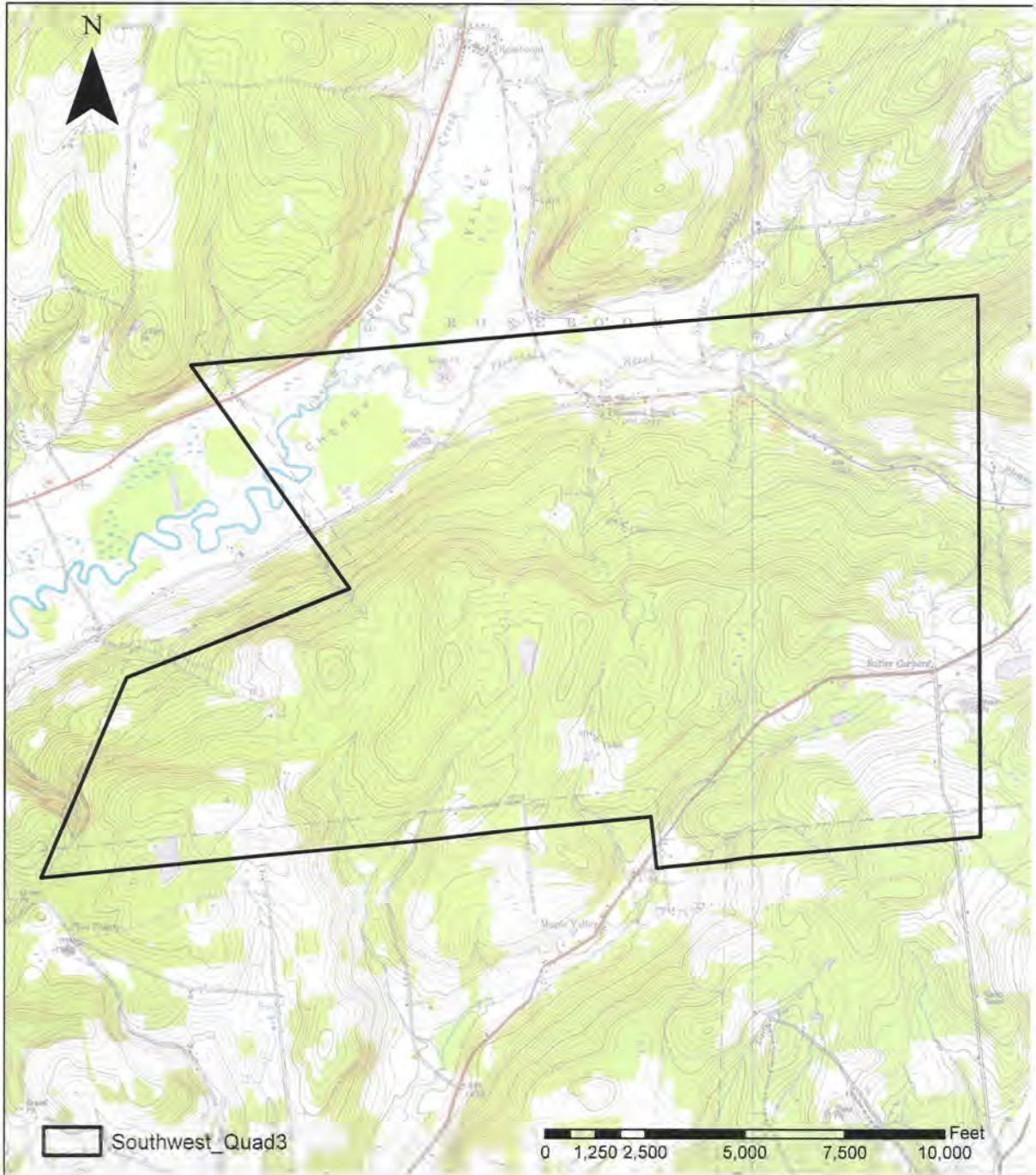


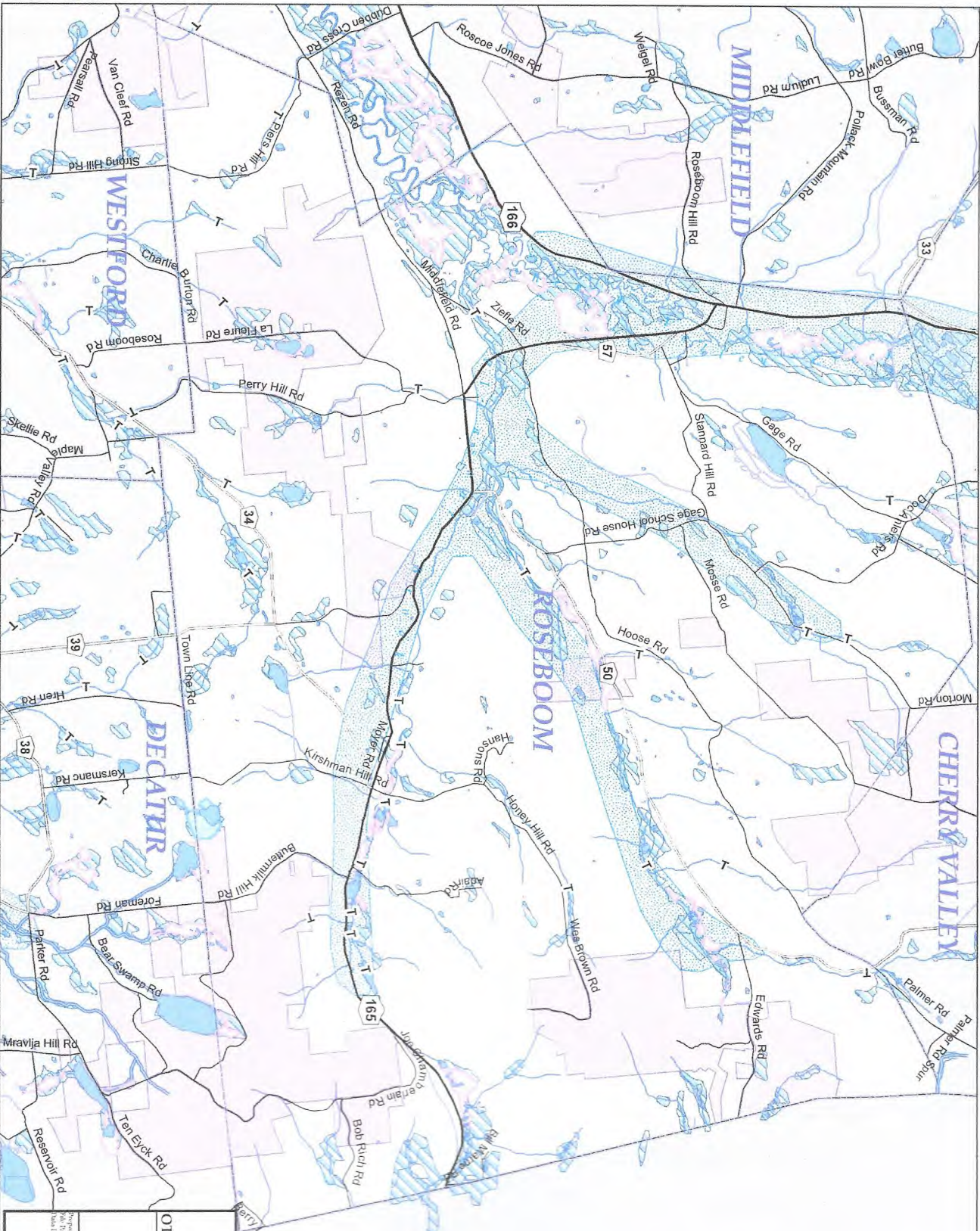


County: Otsego  
Town: Roseboom  
Southwest Quadrant  
Topographic Map

Otsego County Soil & Water  
Conservation District

07/05/2016  
Assisted by: Danielle Parker





**Legend**

- Lakes
- NYS Regulated Wetlands**
  - NYS Regulated Class I Wetland
  - NYS Regulated Class II Wetland
  - NYS Regulated Class III Wetland
  - NYS Regulated Class IV Wetland
- NYS Regulated Streams**
  - Class A Waterbody
  - Class B Waterbody
  - Class C Waterbody
- US Regulated Wetlands
- Principal Aquifers**
  - Principal Aquifer - 10-100 gallons per minute
  - Principal Aquifer - > 100 gallons per minute
  - Public Parks and Forests
  - Municipal Boundaries

Note: T Indicates a NYS Trout stream

**TOWN OF ROSEBOOM  
WATER RESOURCES  
OTSEGO COUNTY  
NEW YORK**

Prepared by:  
Otsego County  
Planning Department  
197 Main Street  
Cooperstown, NY  
13326

Date: 3/3/2011

Map Scale: 1 inch = 0.25 miles

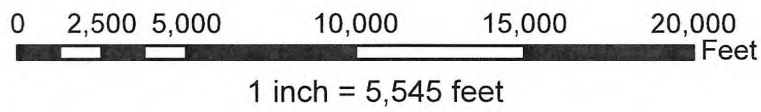
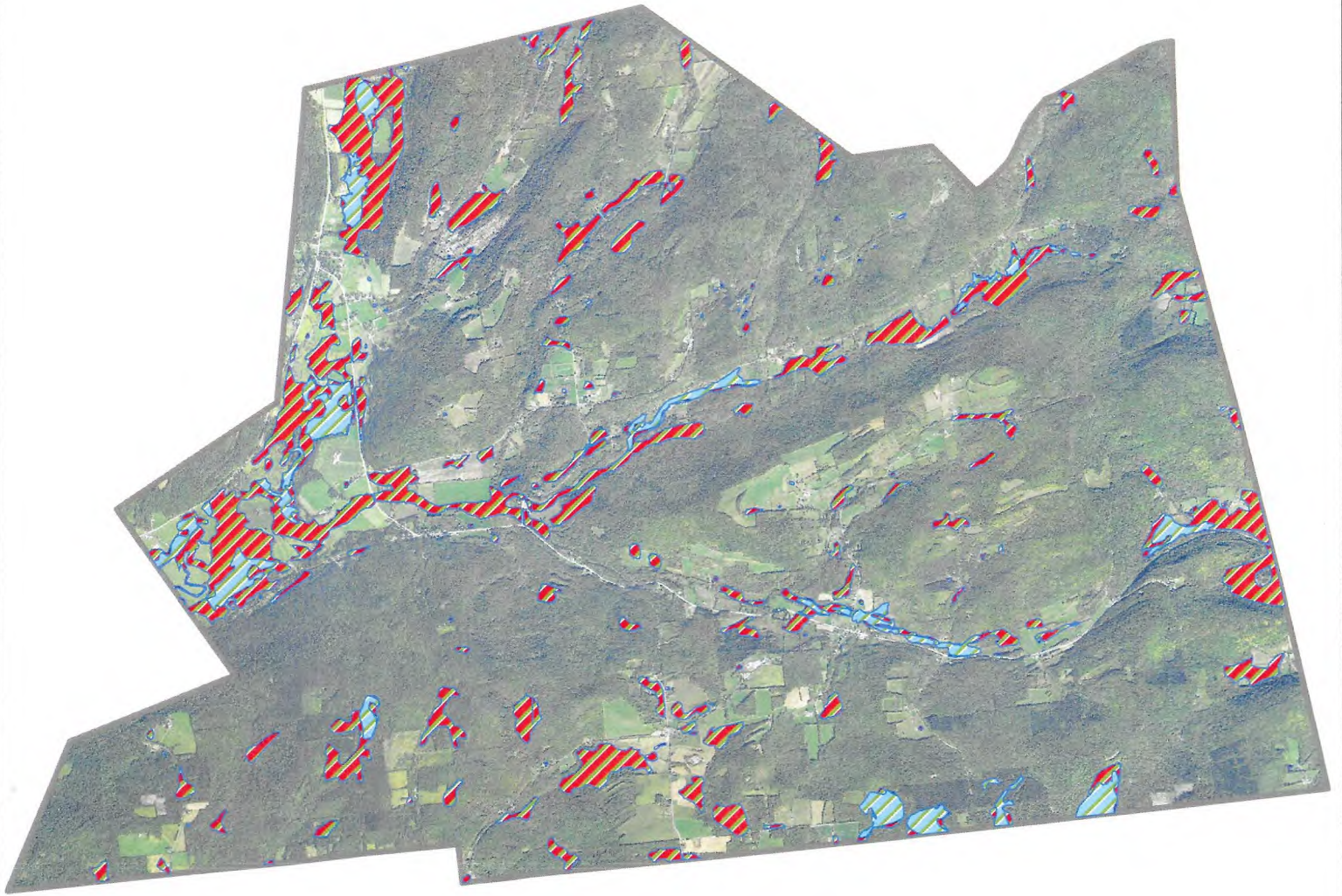
Scale in Miles: 0, 0.25, 0.5, 0.75, 1

SHEET 1 OF 1

Approved By: [Signature]

Map Data: [Text]

# Town of Roseboom Otsego County, NY



## Wetlands

-  DEC Wetlands
-  Federal Wetlands
-  Roseboom Boundary

Surrounding Town Boundaries



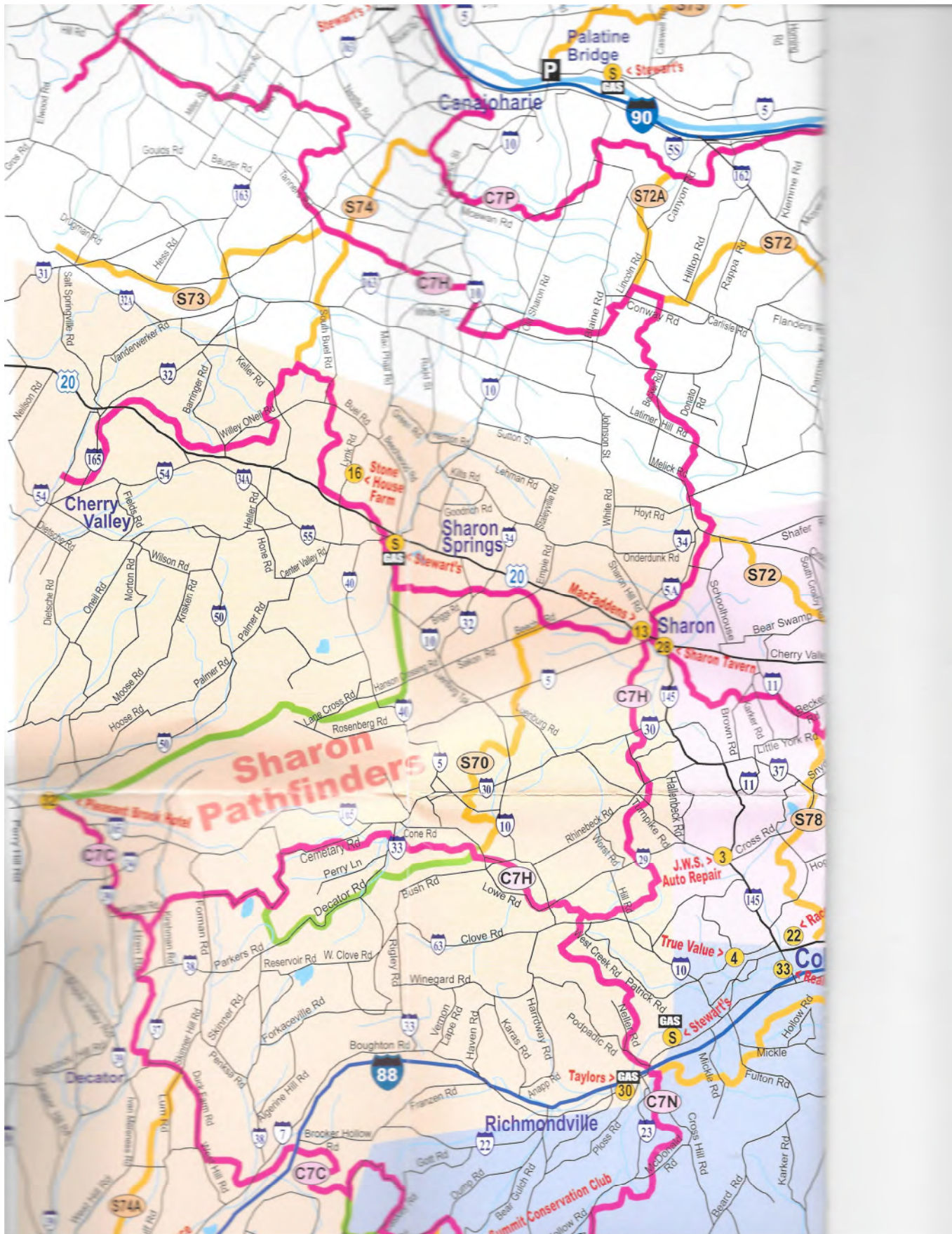
Prepared by:



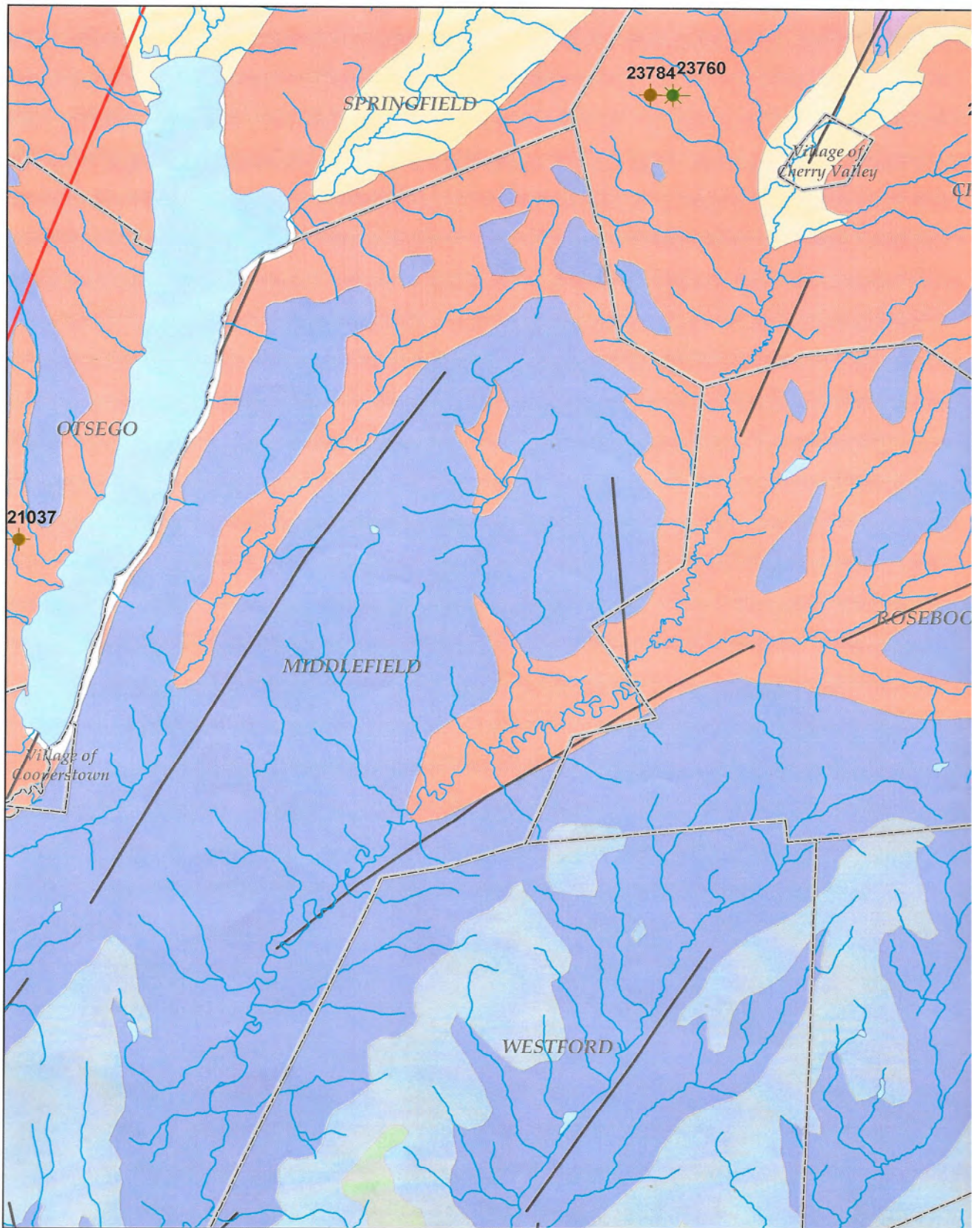
Otsego County  
Soil and Water Conservation District

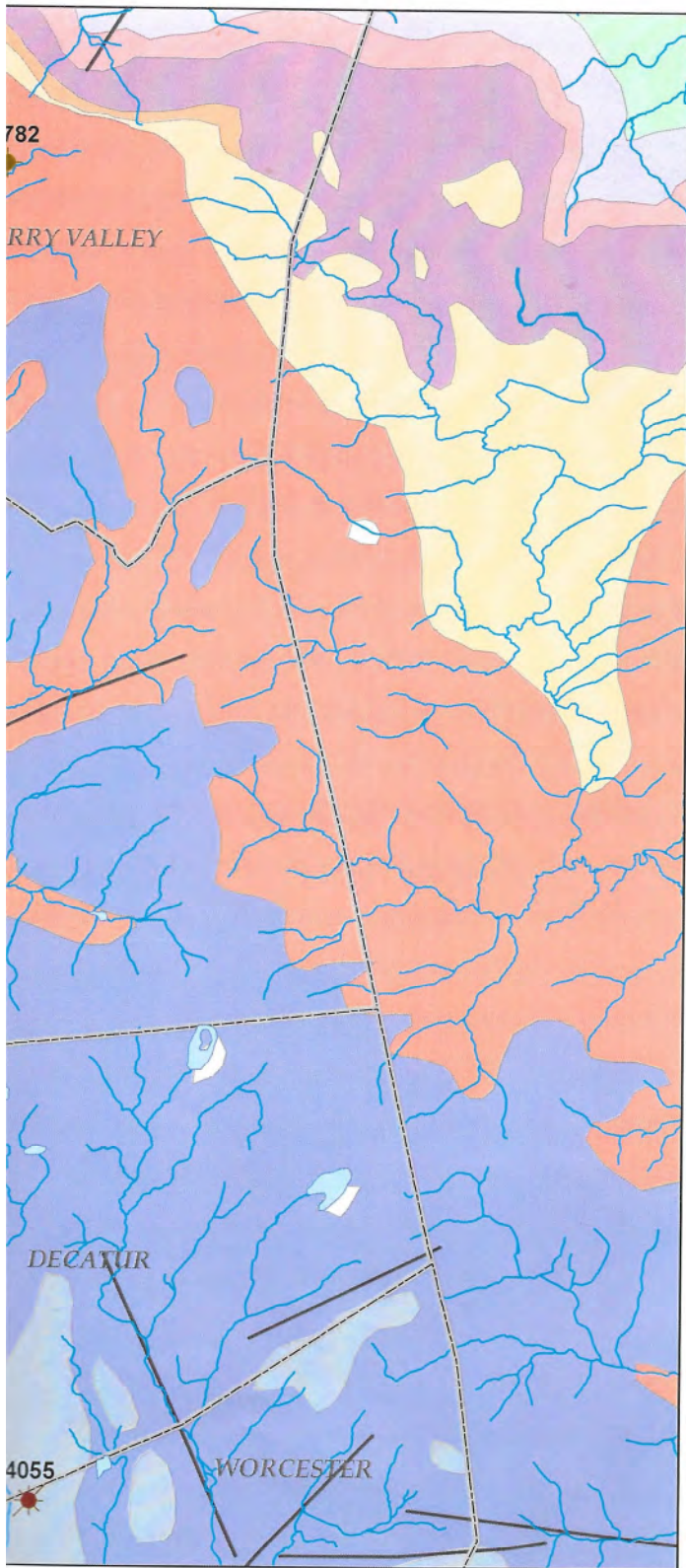
2017 Orthoimagery

Prepared on: 08/08/2018









**Legend**

**Natural Gas Wells with API#**

- Gas Wells, Pre-1970
- Gas Wells, Plugged
- Gas Wells, Permits Expired
- Gas Wells, Permitted

**Brittle Structures**

- Subsurface Fault
- Topographic Linear Feature


**Bedrock at Surface**

- Unadilla Formation
- Moscow Formation
- Panther Mt Formation
- Marcellus Formation
- Onondaga Limestone
- Oriskany Sandstone
- Port Ewen Formation
- Cobleskill Limestone
- Frankfort Formation
- Utica Shale

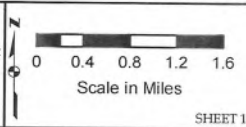
Data Sources:  
 Bedrock Geology, Hudson Mohawk Sheet  
 NYS Museum Map and Chart Series No. 15  
 Preliminary Brittle Structure Map of New York  
 NYS Museum Map and Chart Series No. 31  
 NYS Gas Well Database

**TOWN OF ROSEBOOM  
 BEDROCK GEOLOGY**

OTSEGO COUNTY NEW YORK



Prepared by:  
**Otsego County  
 Planning Department**  
 197 Main Street  
 Cooperstown, NY  
 13326



Scale in Miles

SHEET 1 OF 1

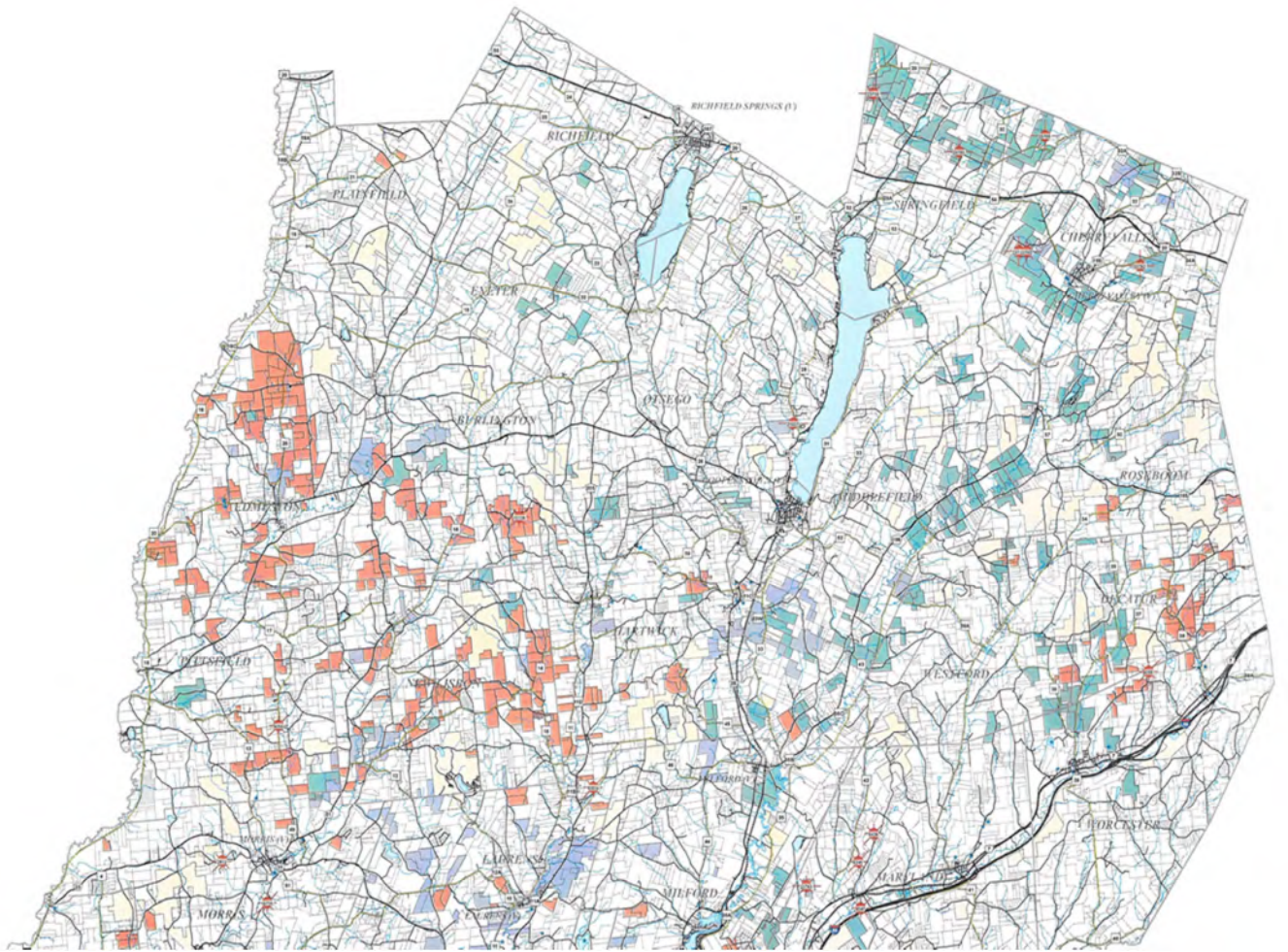
Prepared By: P. Wvckoff Date: 9/1/2011

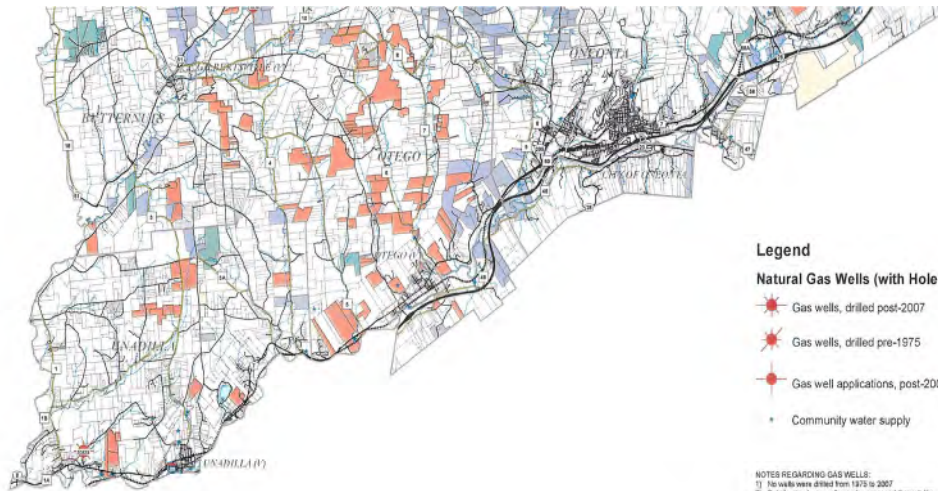
File Path\Name: n:\GIS\MAPS\Municipalities\Roseboom\Roseboom\_berock.mxd

Data Path\Name: n:\GIS\_Data\Geology\myfaults.sp83, Ots\_municipal.sp83

n:\GIS\_Data\Geology\myfaults.shp

n:\GIS\_Data\Geology\hudm\_ber1a





**Legend**

**Natural Gas Wells (with Hole #)**

- Gas wells, drilled post-2007
- Gas wells, drilled pre-1975
- Gas well applications, post-2002, no current permit
- Community water supply

- Terminated or released
- Expired, no record of valid lease as of December 7, 2012
- Expires after December 7, 2012
- Public lands
- Parcel boundaries
- Municipal boundaries
- Local roads
- County highway
- State highway
- US highway
- Railroads

NOTES REGARDING GAS WELLS:  
 1) No wells were drilled from 1975 to 2007  
 2) Details about gas wells can be accessed through the DEC Gas Well Database:  
<http://www.dec.ny.gov/infobase/gas/wellsearch/index.cfm>

**NOTES REGARDING THE DATA:**  
 1. Well hole locations were derived from Otsego County Real Property Tax data and the NYSD OGD list of Community Water Supply Wells (Jan 2008). This data set is not complete.  
 2. Gas well locations were derived from the NYSD DEC geospatial database of valid gas wells and are accurate as of October 10, 2012. This table, dated 2012, no current permit includes permits that expired because drilling did not commence within 180 days of permit issuance.  
**DATA DISCLAIMER:**  
 While every effort has been made to ensure the accuracy of these data, the Otsego County Conservation Association (OCCA) provides this information "as is". OCCA makes no guarantee or warranty, either express or implied, concerning the accuracy, completeness, or usefulness of these data for any particular purpose or other than providing a general overview for planning and educational purposes. The burden for determining fitness for use lies entirely with the user.  
 Factors influencing data accuracy and completeness include, but are not limited to the following:  
 1. Vagueness of the lease  
 2. Delineation of the lease  
 3. Leases that may have a "self-renewing" clause  
 4. Substitution of land prior to date of lease signature  
 5. Subdivision of land subsequent to lease signature  
 6. Merged parcels  
 7. Threshold of lease recording with respect to date of signature and any intervening property transfers and/or subdivisions  
 8. Accuracy of related documents that changes may be periodically made to the information represented in this map but may not be incorporated into the map. Data can also quickly become out of date. All information should be independently verified at the County Clerk's Office in Cooperstown.

SUMMARY STATUS OF KNOWN LEASES		
	Acres	Number of Parcels
Terminated or released	25,159	392
Expired, no record of valid lease as of December 7, 2012	16,429	281
Expires after December 7, 2012	29,065	492
<b>Total leased</b>	<b>70,654</b>	<b>1,165</b>
<b>Percent terminated or released (out of total leased)</b>	<b>35.6%</b>	<b>33.6%</b>
<b>Percent terminated, released or expired as of December 7, 2012 (out of total leased)</b>	<b>58.9%</b>	<b>57.8%</b>
<b>County total</b>	<b>649,328</b>	<b>39,052</b>
<b>Total percent of county that has ever been leased</b>	<b>10.9%</b>	<b>3.0%</b>
<b>Total percent of county that had a lease in effect as of December 7, 2012</b>	<b>4.5%</b>	<b>1.3%</b>

**NOTES REGARDING LEASED PARCELS:**  
 1. A lease is usually released (terminated) following the expiration of the last valid term of the contract period. If the conditions of the first period of the contract were not met (for example, if no drilling activity took place) the release might take place at the end of the first term. Releasing (extinguishing) a lease requires that documentation be filed with the County Clerk's Office indicating that the lease was formally released (terminated). A parcel labeled as "Terminated or released" did not have a gas lease in effect on file at the County Clerk's Office as of December 7, 2012.  
 2. A terminated lease is considered before the completion of the contract period due to a problem with the contract. A parcel with a terminated lease that documentation filed with the County Clerk's Office indicating that the lease was formally terminated. A parcel labeled as "Terminated or released" did not have a gas lease in effect on file at the County Clerk's Office as of December 7, 2012.  
 3. A parcel labeled as "Expired, no record of valid lease as of December 7, 2012" has a lease where the last term of the contract period had expired but the proper documentation to release (extinguish) the lease was not filed with the County Clerk's Office as of December 7, 2012. There were no new leases filed for these parcels at the County Clerk's Office as of the same date.  
 4. A parcel labeled as "Expires after December 7, 2012" has a lease that was still within the last contract period as of December 7, 2012. No leases in the County were extended because of penalties.  
 5. Parcels under current negotiation with land or gas companies, either individually or as a member of a landowner coalition, are not indicated on this map.

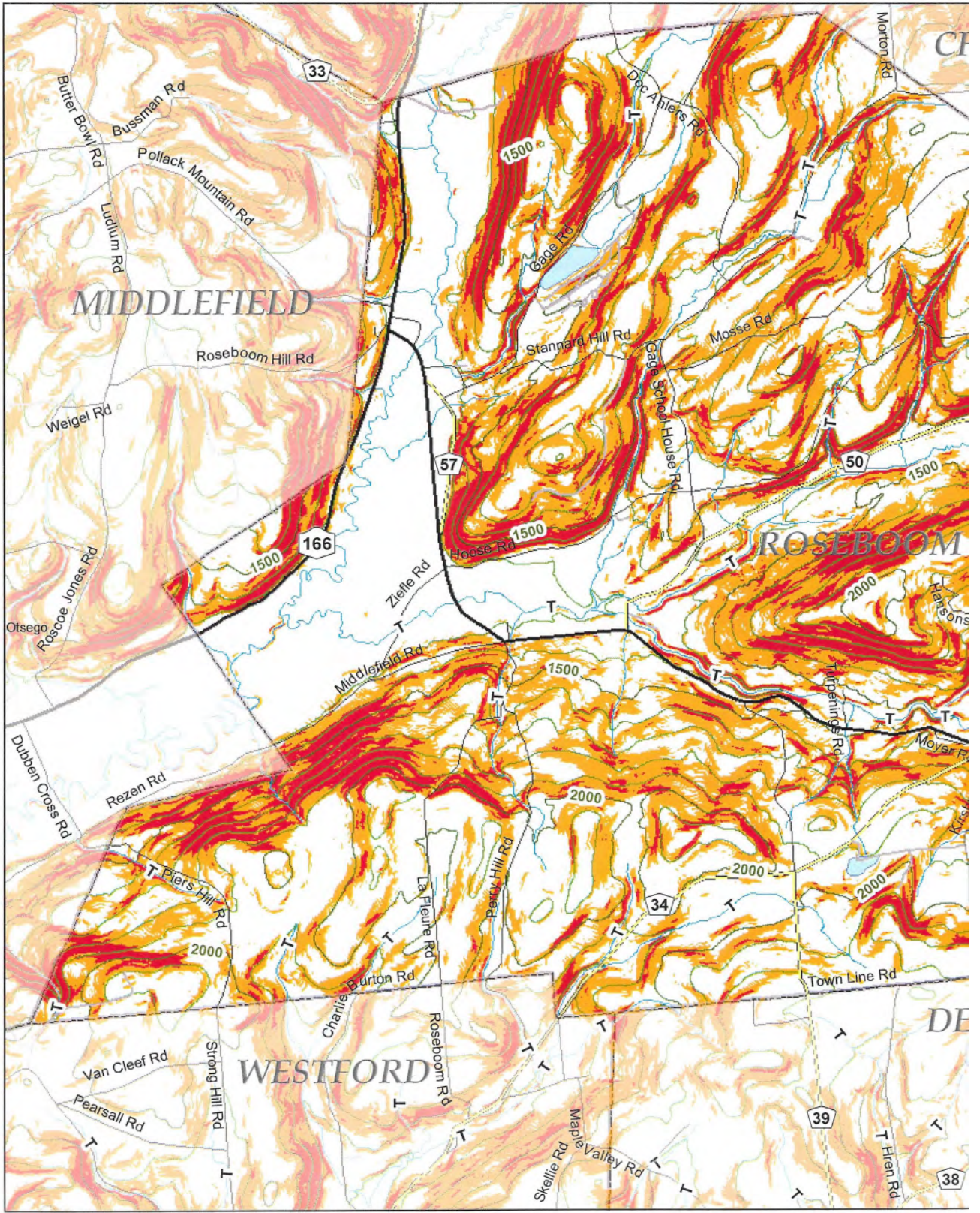
This map reflects updated information through December 7, 2012.

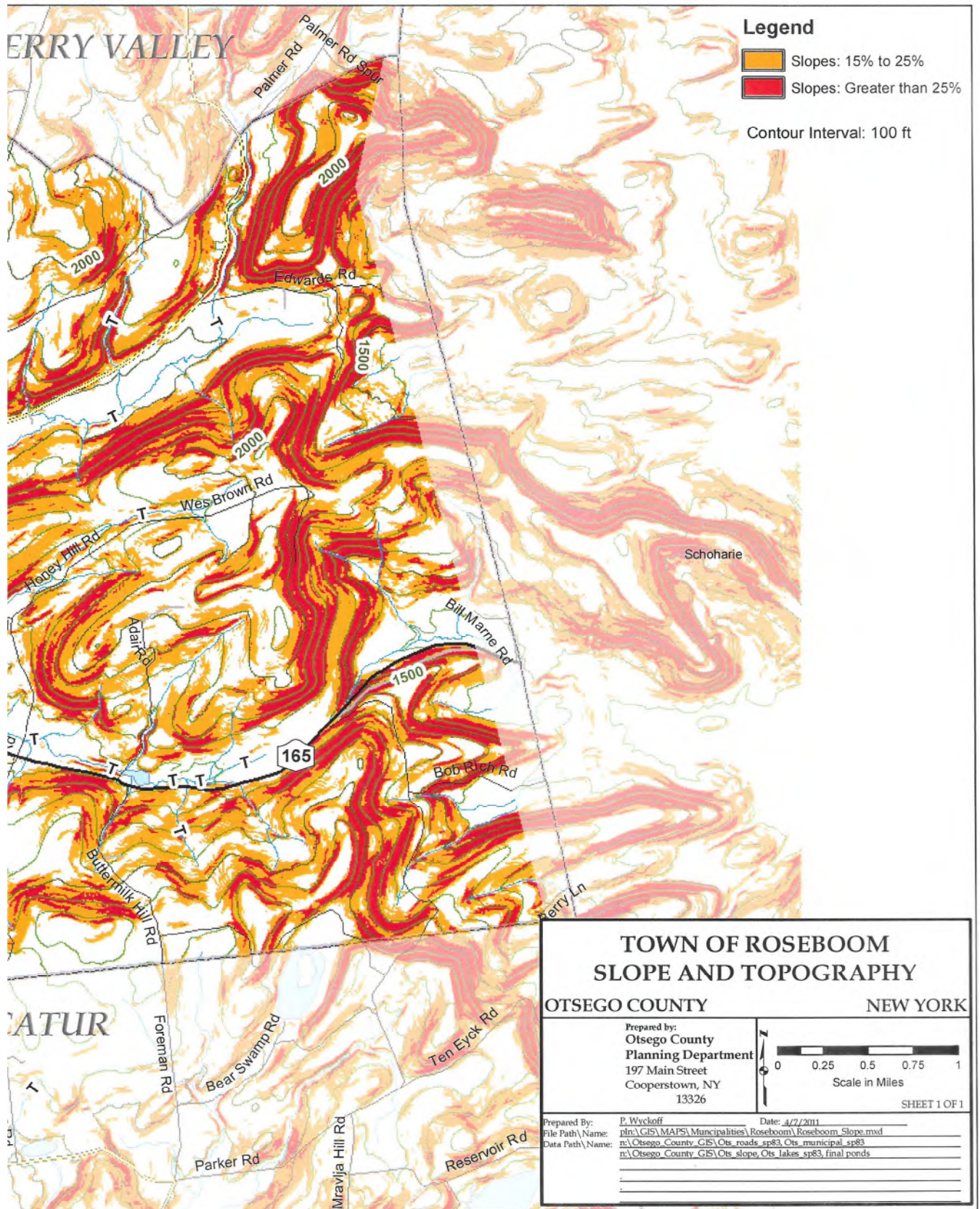
# NATURAL GAS WELL LOCATIONS AND LEASED PROPERTIES

## OTSEGO COUNTY NEW YORK

Map Prepared by:  
 Otsego County  
 Conservation Association  
 7195 St. Ivery, 80  
 PO Box 931  
 Cooperstown, NY 13326

SHEET 1 OF 1  
 Date: January 10, 2013





**Legend**

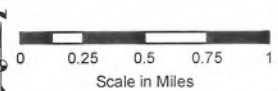
- Slopes: 15% to 25%
- Slopes: Greater than 25%

Contour Interval: 100 ft

**TOWN OF ROSEBOOM  
SLOPE AND TOPOGRAPHY**

OTSEGO COUNTY NEW YORK

Prepared by:  
**Otsego County  
Planning Department**  
197 Main Street  
Cooperstown, NY  
13326



SHEET 1 OF 1

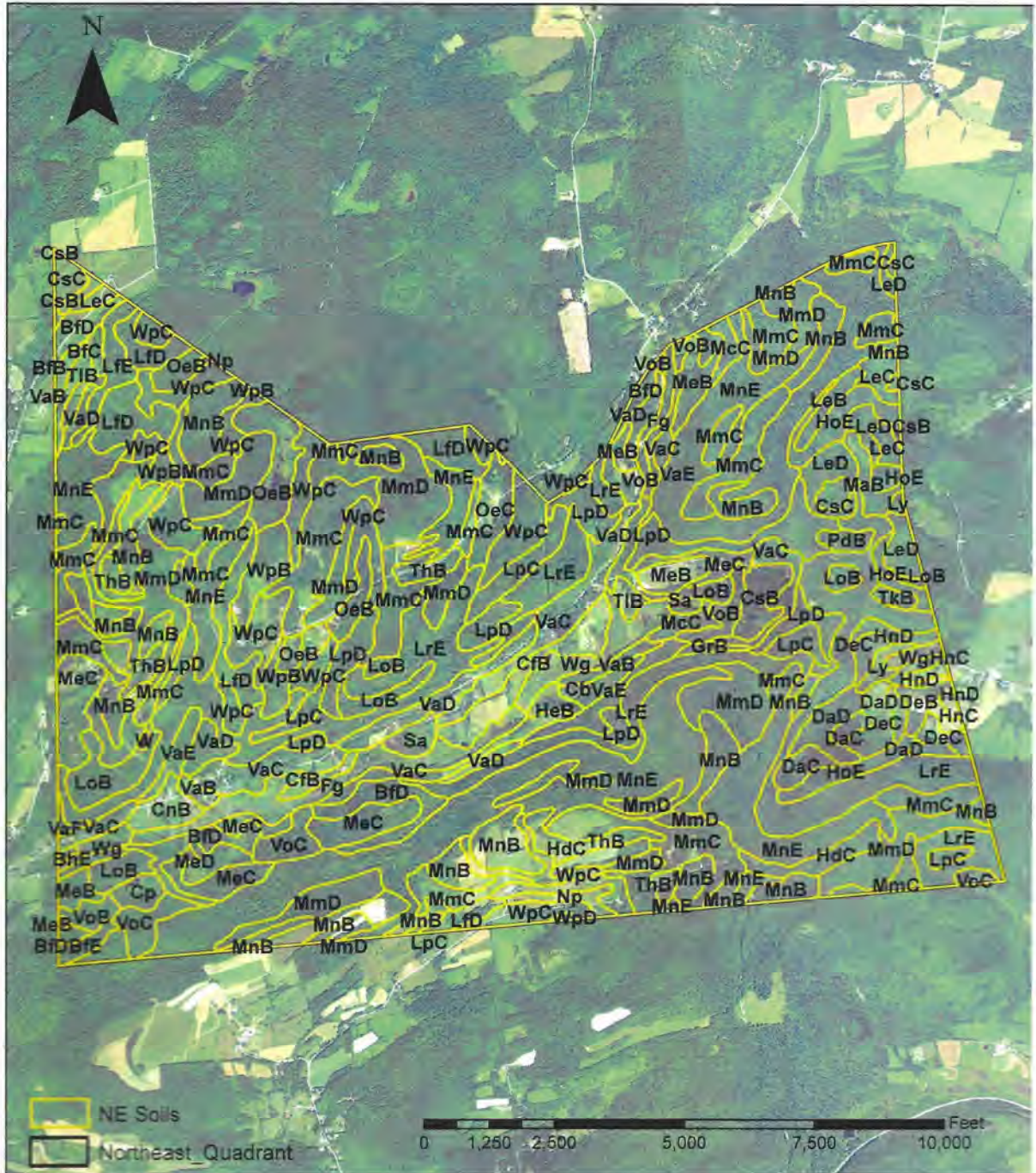
Prepared By: E. Wyckoff Date: 4/7/2011  
 File Path\Name: n:\GIS\MAPS\Municipalities\Roseboom\Roseboom\_Slope.mxd  
 Data Path\Name: n:\Otsego County\_GIS\Ots\_roads\_sp83,Ots\_municipal\_sp83  
 n:\Otsego County\_GIS\Ots\_slope,Ots\_lakes\_sp83,final\_ponds



County: Otsego  
Town: Roseboom  
Northeast Quadrant  
Soils Map

Otsego County Soil & Water  
Conservation District

07/05/2016  
Assisted by: Danielle Parker

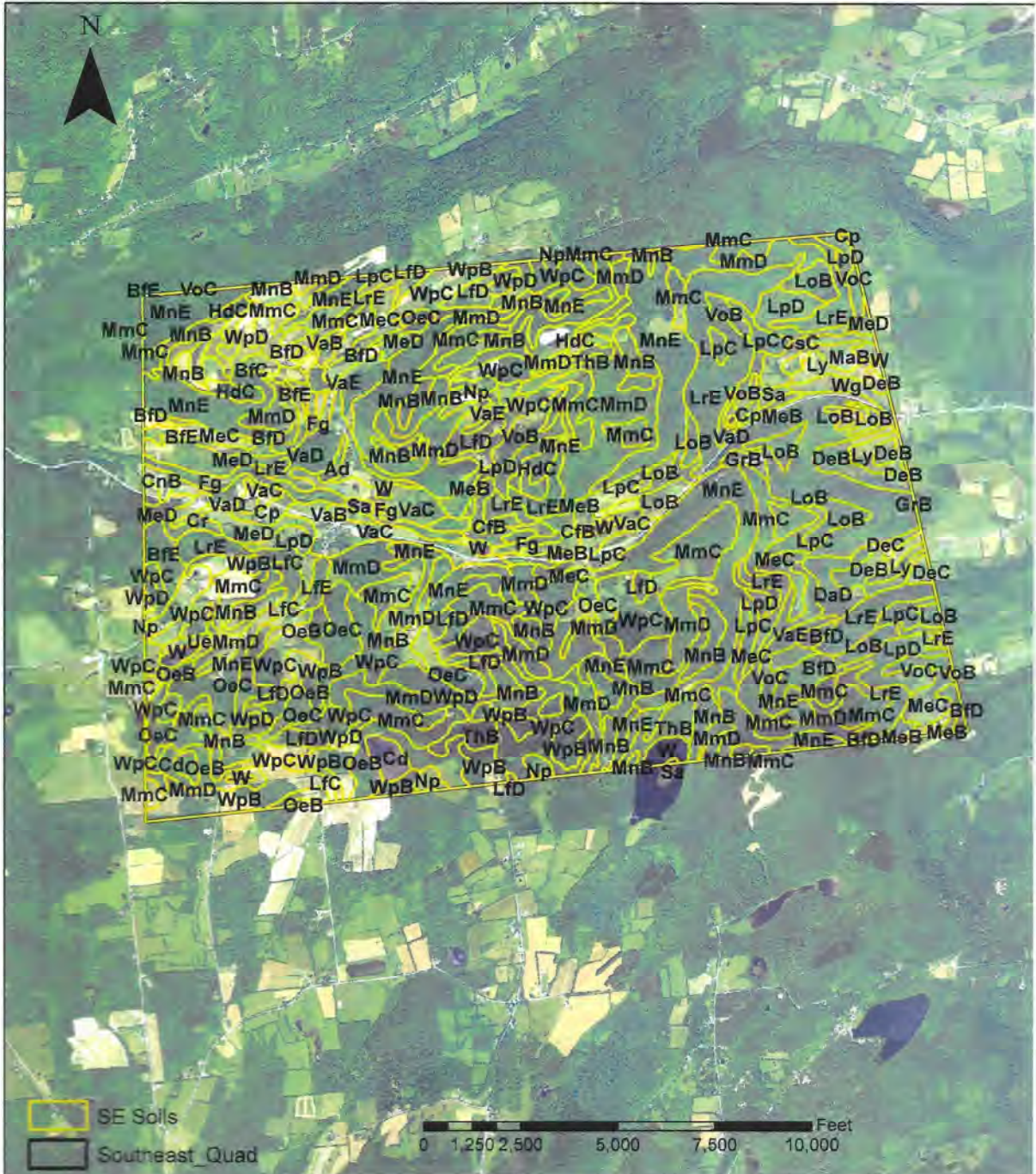




County: Otsego  
Town: Roseboom  
Southeast Quadrant  
Soils Map

Otsego County Soil & Water  
Conservation District

07/05/2016  
Assisted by: Danielle Parker



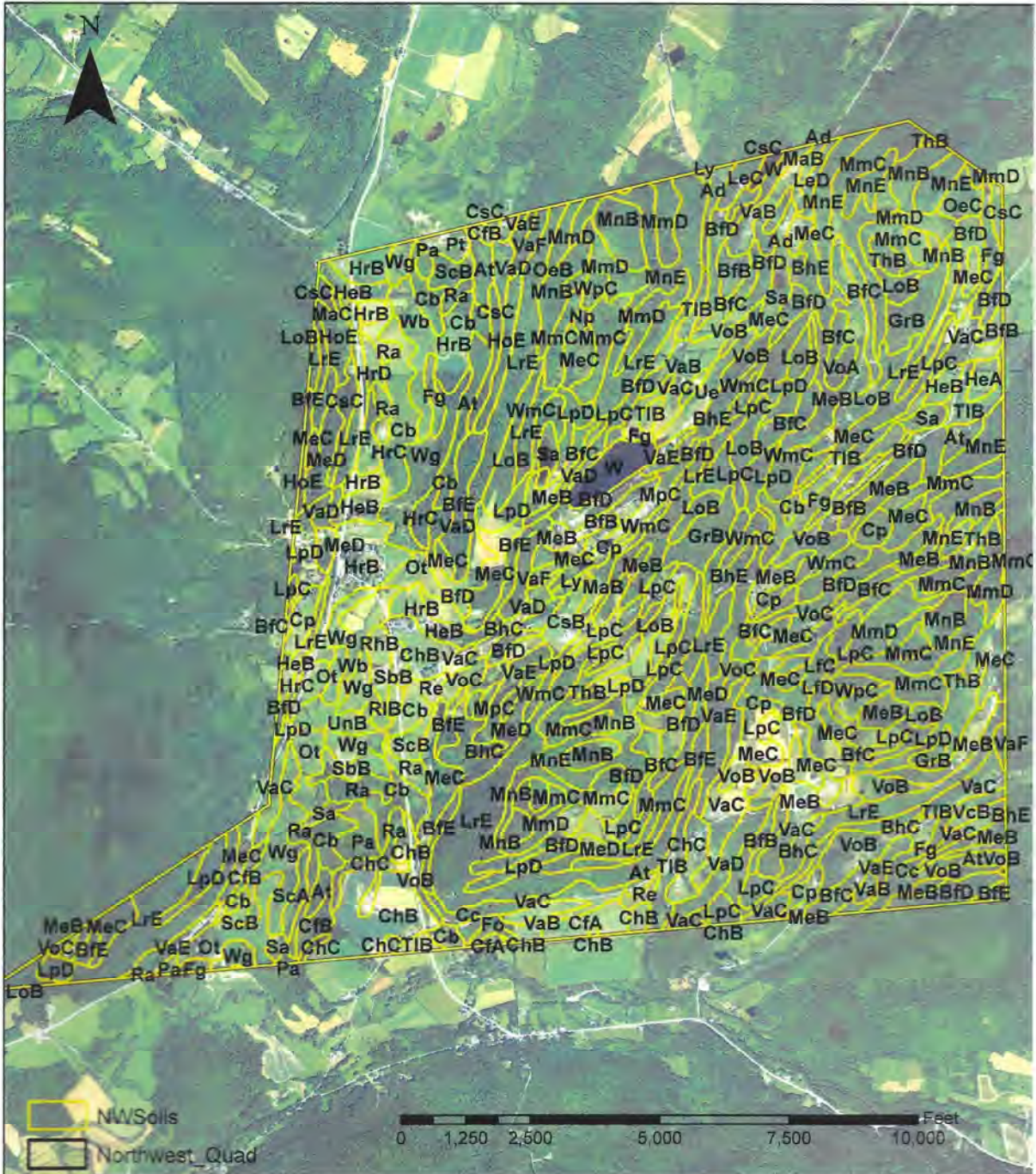




County: Otsego  
Town: Roseboom  
Northwest Quadrant  
Soils Map

Otsego County Soil & Water  
Conservation District

07/05/2016  
Assisted by: Danielle Parker





County: Otsego  
Town: Roseboom  
Southwest Quadrant  
Soils Map

Otsego County Soil & Water  
Conservation District

07/05/2016  
Assisted by: Danielle Parker

