

# 25 x 12 Energy Reduction

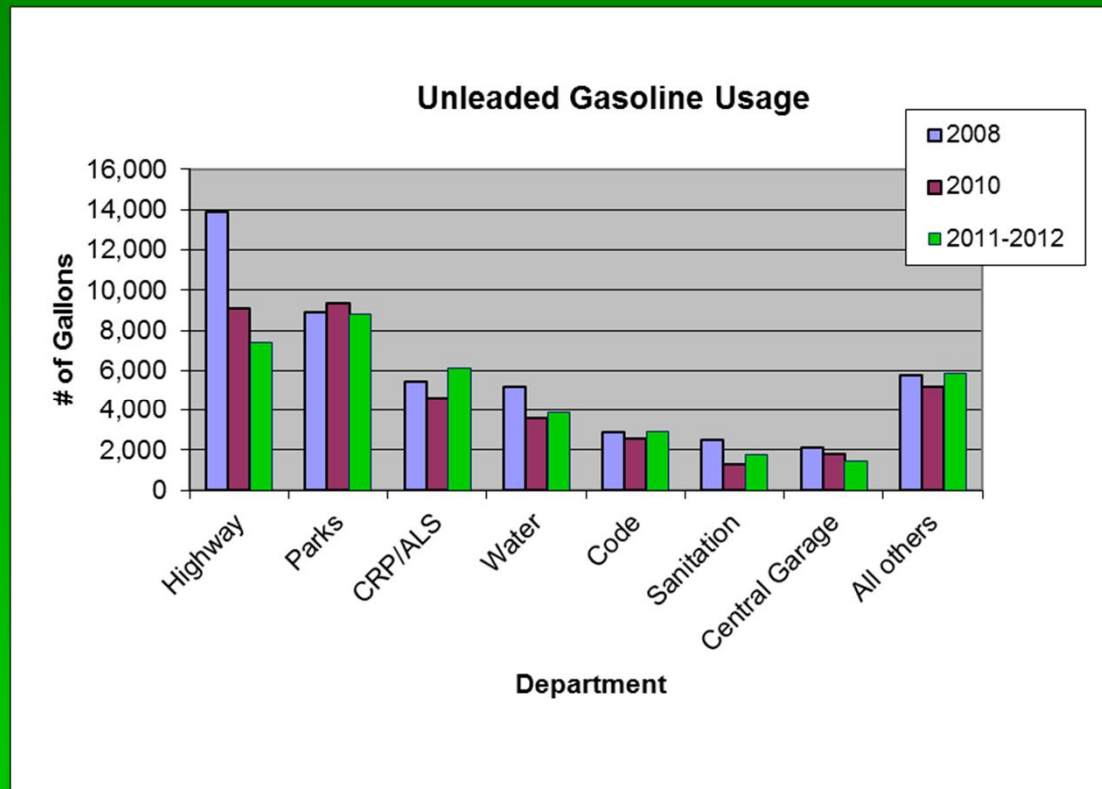
- Reduce energy usage 25% by 2012

## Indicators

- Gasoline
- Diesel
- Heating Oil
- Electricity (TH)
- Natural Gas (TH)

- Lighting improvements at TH
- Occupancy Sensors at TH
- Intelidin® units installed on Boilers at TH
- Education of staff (Green Team)
- Staffing reductions (DES and other Depts)

# 2008 to 2012 Gasoline



## Reductions

Highway = 46.76%

Parks = 1.09%

CRP/ALS = -11.53%

Water = 24.97%

Code = -1.36%

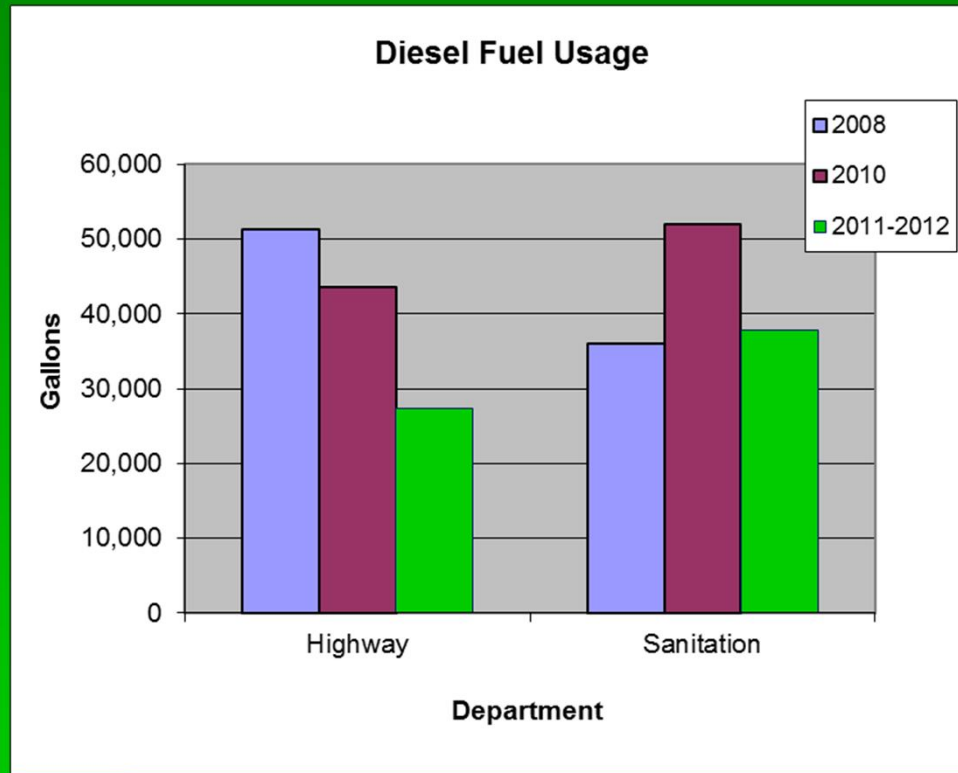
Sanitation = 29.23%

Central Garage = 29.61%

All others = -2.01%

**TOTAL = 18.09%**

# 2008 to 2012 Diesel



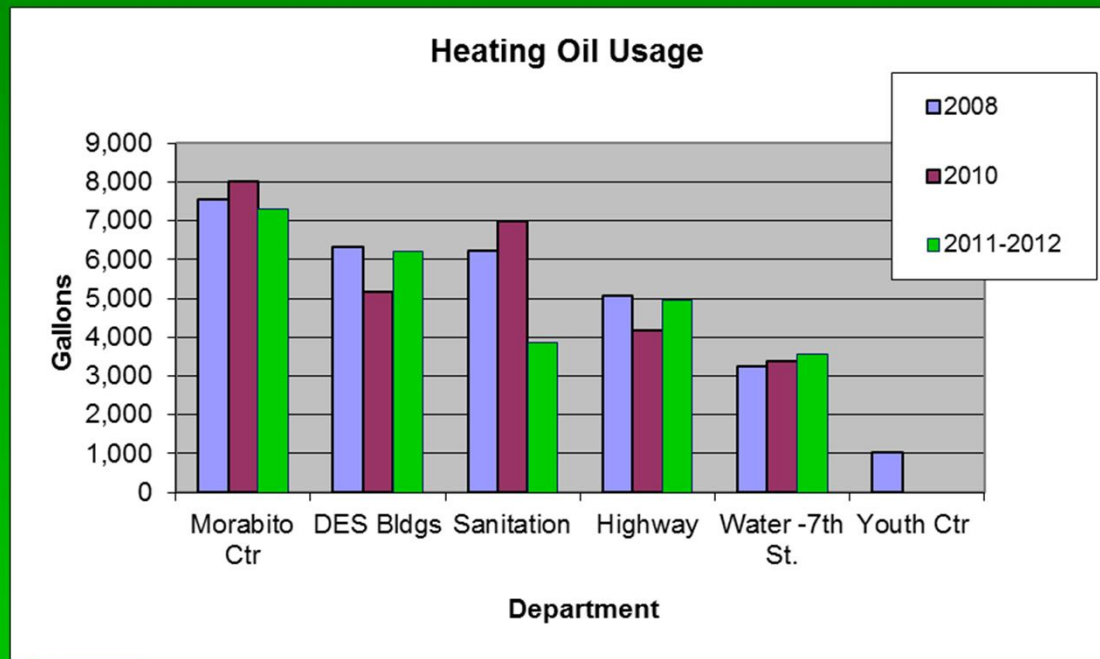
## Reductions

- Highway = 46.73%
- Sanitation = -4.80%\*

**TOTAL = 25.47%**

\* The 2008 value was take from an existing excel spreadsheet and has not been verified.

# 2008 to 2012 Heating Oil



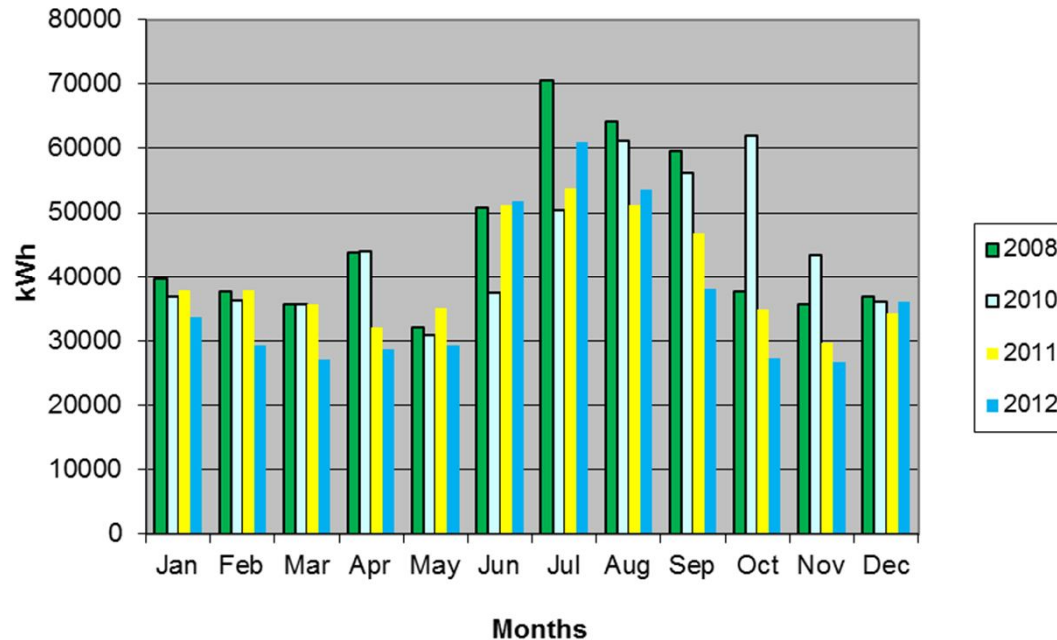
## Reductions

- Morabito Ctr = 3.03%
- DES Buildings = 2.01%
- Sanitation = 37.83%
- Highway = 2.76%
- Water Dept = -9.74%
- Youth Center = 100%

**TOTAL = 12.06%**

# 2008 to 2012 Electricity Town Hall

Electricity Consumption - Town Hall



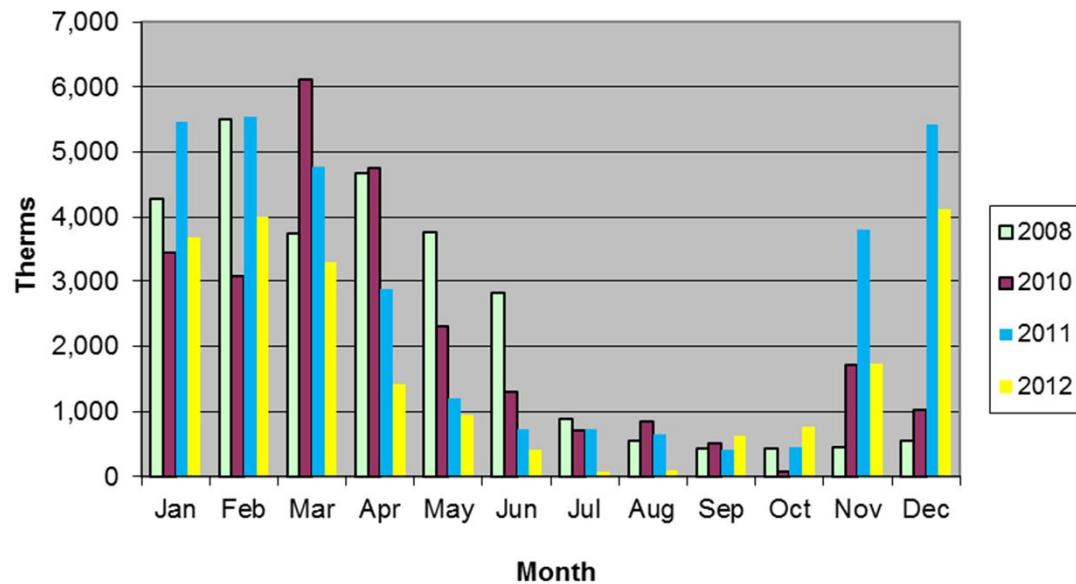
## Reductions

- 2008 – 544,200 kWh
- 2010 – 530,137 kWh
- 2011 – 480,000 kWh
- 2012 – 442,160 kWh

**TOTAL = 18.75%**

# 2008 to 2012 Natural Gas Town Hall

Natural Gas Usage at Town Hall



## Reductions

- 2008 – 28,115 Therms
- 2010 – 25,916 Therms
- 2011 – 32,049 Therms
- 2012 – 21,209 Therms

**TOTAL = 24.56%**

# 2008 to 2012 Totals

- Unleaded Gasoline = 18.09% reduction
- Diesel Fuel = 25.47% reduction
- Town Hall Natural Gas = 24.56% reduction
- Town Hall Electricity = 18.75% reduction
- Heating Oil = 12.06% reduction

# Potential Projects

- Fuel efficient vehicles through leasing
  - 1 ton trucks and smaller
- HVAC improvements at smaller facilities
- Lighting improvements at smaller facilities
- Computer operating policy at TH
- Performance Contracting to bundle projects