

3.31 Energy & GHG management_Facility Dude .pdf

3.31 Energy & GHG management_Facility Dude .pdf - Adobe Acrobat Pro

UtilityTrac Plus

Home Help More Log Out

Search for Acct, Bldg, Meter by code or name

Home

Dashboard

- Usage Trend
- Cost Avoidance Trends
- Program to Date Cost Savings
- Bill Problems
- Bill Processing
- Top 10 Buildings by Cost
- Top 10 Building Cost Avoidance
- Bottom 10 Building Cost Avoidance
- ENERGY STAR
- Getting Started
- Unit Cost Summary

Carbon Footprint

Data from: All Buildings

Calendar Year	Carbon Dioxide	Nitrous Oxide	Methane
2013	~5,500	~0	~0
2014	~5,000	~0	~0
2015	~5,200	~0	~0
2016	~500	~0	~0

Cost Summary

Data from: All Buildings

Commodity	Percentage
Electric	94.4%
Natural Gas	5.6%

Cost Trend

Data from: All Buildings

Cost Trend (FY ends in Dec of year shown)

Top 10 Meters by Cost

Data from: All Buildings

Meter Code	Commodity	Place	Total Cost
41126924_3557	Electric	U.c. Law Entor...	\$323,720
28114648_3557	Electric	U.c. Office Bui...	\$66,795
97117535_3557	Electric	Ulster Avenue ...	\$54,416
28634699_3557	Electric	Mental Health ...	\$42,698
21171453_3557	Electric	Information Ser...	\$42,326
97185703_3557	Electric	U.c. Record St...	\$31,237
21260659_3557	Electric	Court House	\$29,176
21408148_3557	Electric	Ucat	\$25,838
93781691_3557	Electric	Court House	\$19,503
93764606_3557	Electric	Trudy Resnick ...	\$17,449

3:08 PM 6/27/2016

Document1 - Microsoft Word

UtilityTrac

Buildings & Meters

Uster County

- Lighting Combined
 - Area Lighting
 - BRC Development Court
 - Central Auto
 - Clerk
 - Courts
 - Emergency Management
 - Environment
 - Gh Healthcare Facility
 - Golden Hill Sprinkler
 - Information Services
 - Mental Health
 - Multiple Departments
 - Probation
 - Public Works
 - Sheriff
 - Social Services
 - Sophie Finn SUNY Kingston
 - Uc Area Transit
 - Veterans Home

Actual Data | Calendarized Data | Normalized Data | Savings | Organization Properties

Summary | Commodity | Monthly | Greenhouse Gas

Calendar Year Emissions

Year	Carbon Dioxide (MTON)	Methane (MTON)	Nitrous Oxide (MTON)
2013	~4,000	~0	~0
2014	~4,000	~0	~0
2015	~4,000	~0	~0
2016	~500	~0	~0

Greenhouse Gases by Category

Category	Percentage
Purch Elec	87.9%
Stationary	12%

Greenhouse Gases by Type

Type	Percentage
Carbon Dioxide	98.7%
Methane	0%
Nitrous Oxide	0.3%

Greenhouse Gases by Commodity

Commodity	Percentage
Electric	87.9%
Natural Gas	12%

Page: 2 of 2 | Words: 0 | 100% | 3:10 PM 6/27/2016

3.31 Energy & GHG management_Facility Dude .pdf - Adobe Acrobat Pro

UtilityTrac

Buildings & Meters

- Ulster County
 - Lighting Combined
 - Area Lighting
 - BRC Development Court
 - Central Auto
 - Clerk
 - Courts
 - Emergency Management
 - Environment
 - Gh Healthcare Facility
 - Golden Hill Sprinkler
 - Information Services
 - Mental Health
 - Multiple Departments
 - Probation
 - Public Works
 - Sheriff
 - Social Services
 - Sophie Finn SUNY Kingston
 - Uc Area Transit
 - Veterans Home

Actual Data | Calendarized Data | Normalized Data | Savings | Organization Properties

Summary | Commodity | Monthly | Greenhouse Gas

Calendar Year Emissions

Total Calendar Year Emissions - CO2 Equivalent

Year	Nitrous Oxide (MTON)	Methane (MTON)	Carbon Dioxide (MTON)
2013	~100	~100	~5,800
2014	~100	~100	~5,000
2015	~100	~100	~5,200
2016	~100	~100	~500

Direct - Stationary

Year	Nitrous Oxide (MTON)	Methane (MTON)	Carbon Dioxide (MTON)
2013	~100	~100	~800
2014	~100	~100	~900
2015	~100	~100	~1,000
2016	~100	~100	~100

Indirect - Purch Elec

Year	Nitrous Oxide (MTON)	Methane (MTON)	Carbon Dioxide (MTON)
2013	~100	~100	~4,800
2014	~100	~100	~4,000
2015	~100	~100	~4,200
2016	~100	~100	~400

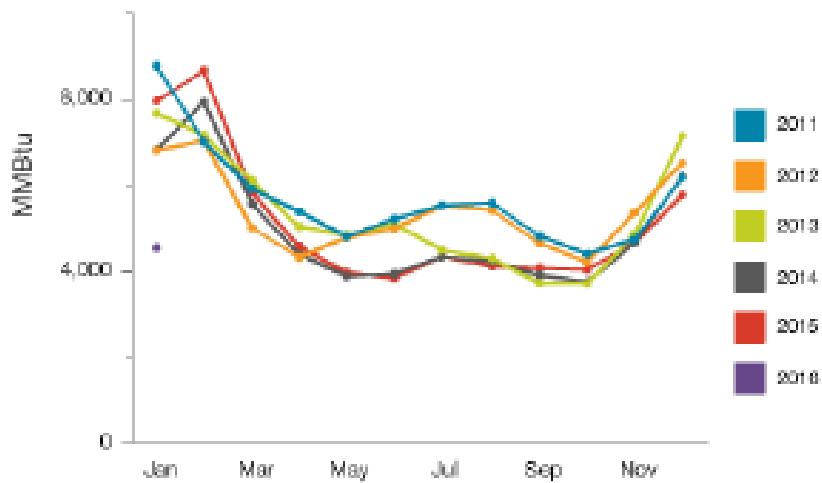
3:10 PM
6/27/2016

Usage Trend



Data from: All Buildings

Usage Trend
(FY ends in Dec of year shown)



To move this item to the Dashboard, select the desired location. The item currently in that location will move to the Dashboard menu list in the left panel.

Cancel	Apply
--------	-------

Open [Icons] Tools Fill & Sign Comment Sign In

The screenshot shows the UtilityTrac Plus web application interface. On the left is a navigation tree under 'Buildings & Meters' listing various locations like 'Utster County', 'Lighting Combined', and 'ERDC Development Court'. The main area displays 'Actual Data' for 'Electric' and 'Natural Gas' with three bar charts: 'Monthly Cost', 'Monthly Usa', and 'Monthly Unit Cost'. The 'Monthly Usa' chart compares 'Previous 12 Months' (blue) and 'Current 12 Months' (orange). The 'Monthly Unit Cost' chart also compares these two periods. The interface includes a search bar and navigation tabs at the top.

Export PDF
Create PDF
Edit PDF
Adobe Acrobat Pro
Send Files
Store Files

[Taskbar icons: Internet Explorer, File Explorer, etc.] Desktop 10:42 AM 3/7/2016